

name

ART

WARMUP



Journal

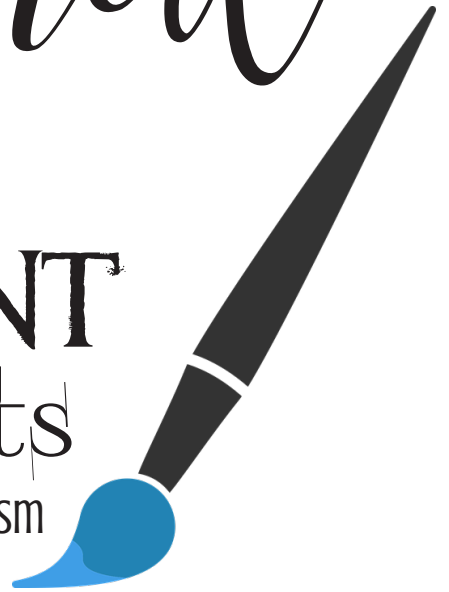


A FOCUS ON

ANCIENT

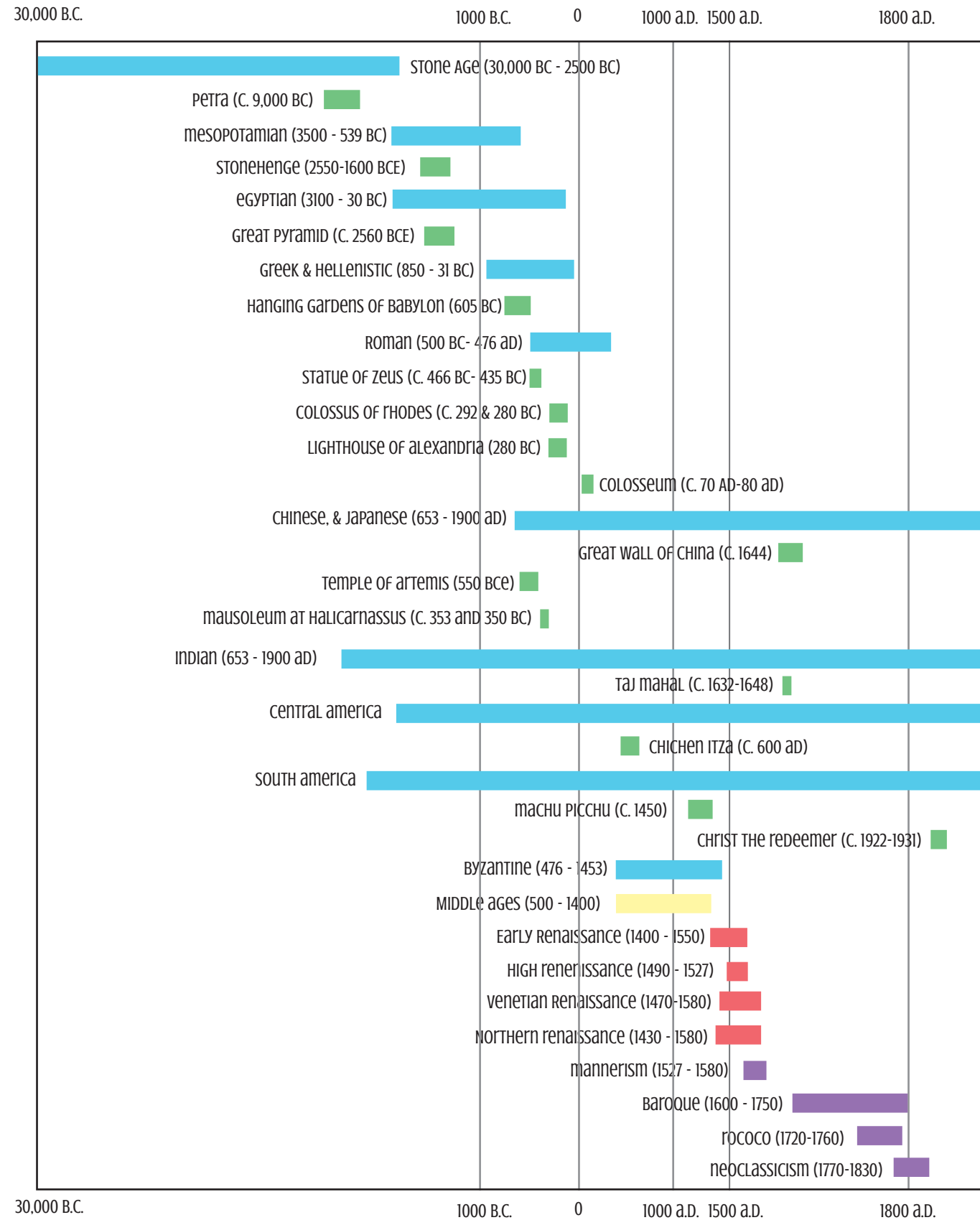
art & artists

STONE AGE THROUGH NEOCLASSICISM



FOR THE 20 - 20 SCHOOL year

# ancient art timeline



# ART WARMUP Journal

## ANCIENT art & artists

Ancient World 30,000 B.C. - 1500	Renaissance 1400 - 1550	World Wonders 9,000 B.C. - 1931
Stone Age Mesopotamian Egyptian Greek & Hellenistic Roman Indian Chinese Japanese Byzantine Islamic Central American South American	Early Renaissance High Renaissance Venetian Renaissance Northern Renaissance	Machu Picchu Taj Mahal Colosseum Great Wall of China Petra Chichen Itza Colossus of Rhodes Mausoleum at Halicarnassus Hanging Gardens of Babylon Lighthouse of Alexandria Temple of Artemis Great Pyramid Statue of Zeus Christ the Redeemer
Middle Ages 500 - 1400	European Art 1527 - 1760	
	Mannerism Baroque Rococo Neoclassicism	

PERSEPOLIS • POLYKLEITOS • PRAXITELES • HOKUSAI • HIROSHIGE • BLANCHE OF CASTILE • CIMABUE • GIOTTO DI BONDONE • ANDREI RUBLEV • MASACCIO • CAMPIN • ROGIER VAN DER WEYDEN • JAN VAN EYCK • GUTENBERG FOUQUET • DUC DE BERRY • Ghiberti • Brunelleschi • Da Vinci • Michaelangelo • Raphael • Donatello Palladio • Crivelli • Parmigianino • El Greco • Titian • Jacopo de Pontomo • Tintoretto Pieter Bruegel the Elder • Durer • Van Hemessen • Metsys • Holbein the Younger • Bosch • Rembrandt Bernini • Caravaggio • Claesz • Rubens • Velazquez • Vermeer • Ruysch • Fragonard • Wright of Derby Panini • Batoni • Bellotto • Canaletto • Joshua • Trumbull • David • Poussin • Giroust • Kauffmann

# What IS...

## art HISTORY

Define IT: \_\_\_\_\_

QUESTIONS ART HISTORIANS ASK:

--	--	--	--	--

# Search THIS...

## ancient art

*weekly* REFLECTION  
IDEAS, THOUGHTS, QUESTIONS, DISCOVERIES

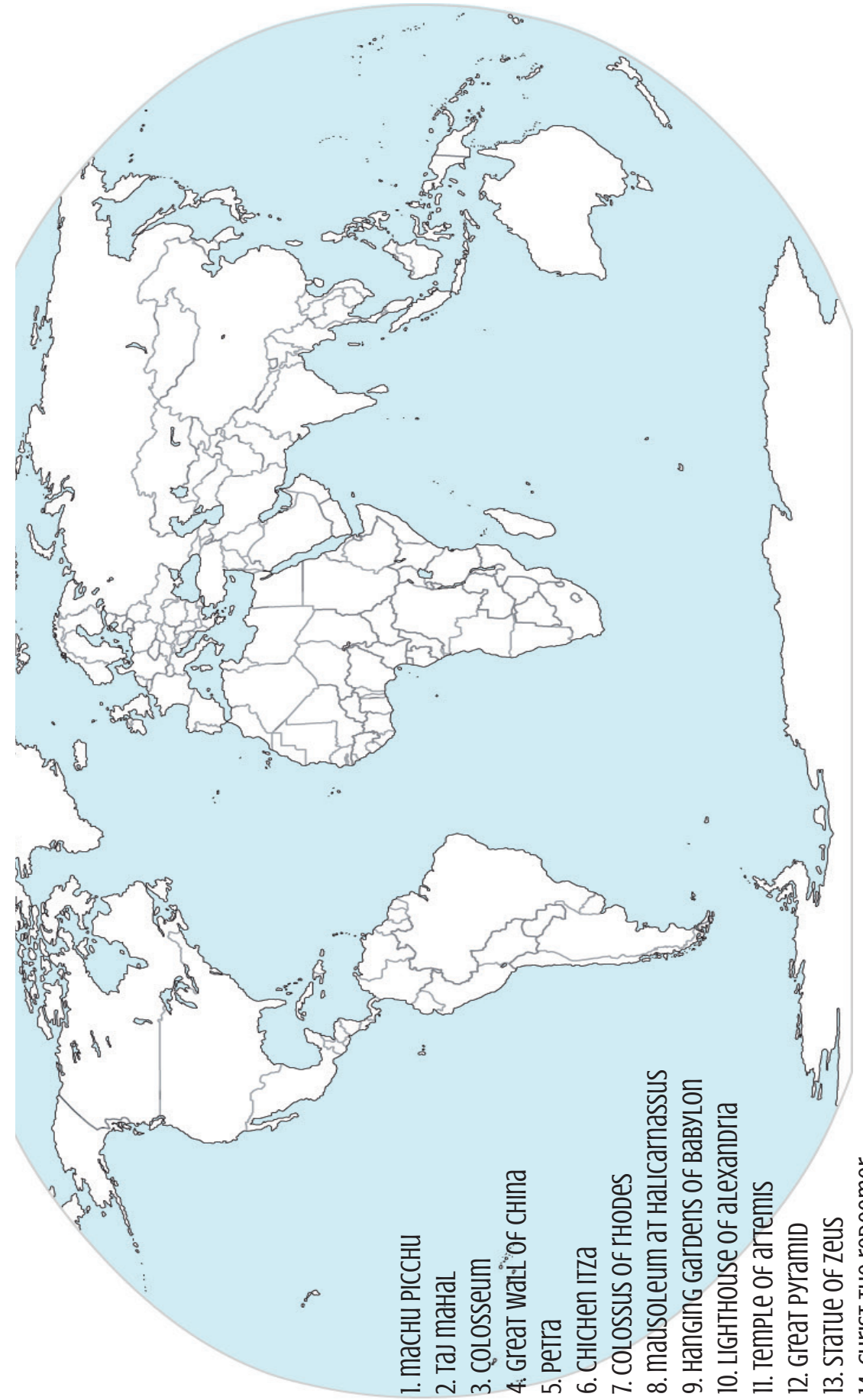
- Stone Age
- Mesopotamian
- Egyptian
- Hellenistic
- Roman
- Indian
- Chinese
- Japanese
- Byzantine
- Islamic
- Renaissance
- Middle Ages
- Mannerism
- Baroque
- Rococo
- Neoclassicism

U Y S N Q C C H I N E S E J L  
 J I Y E P E F P A M Z D Q I V  
 A H D O F E R B C E E D W M M  
 P P Z C C G J Y E Y G R E I R  
 A I W L I Y G Z U O A O C D W  
 N N E A S P T A Q W E C N D I  
 E T X S L T D N O L N O A L I  
 S B W S A I P T R J O C S E N  
 E P E I M A T I A F T O S A D  
 W P U C I N C N B S S J I G I  
 G Y Y I C R J E S P M E A E A  
 O M E S O P O T A M I A N S N  
 D L T M O F R O M A N J E L U  
 B C I T S I N E L L E H R V J  
 A J T G C B M A N N E R I S M

# Map THIS...

## THE WONDERS OF THE WORLD

MAP EACH OF THE WORLD WONDERS BY DRAWING A LINE TO THE LOCATION AND IDENTIFYING WITH THEIR NUMBER.



1. MACHU PICCHU
2. TAJ MAHAL
3. COLOSSEUM
4. GREAT WALL OF CHINA
5. PETRA
6. CHICHEN ITZA
7. COLOSSUS OF RHODES
8. MAUSOLEUM AT HALICARNASSUS
9. HANGING GARDENS OF BABYLON
10. LIGHTHOUSE OF ALEXANDRIA
11. TEMPLE OF ARTEMIS
12. GREAT PYRAMID
13. STATUE OF ZEUS
14. CHRIST THE REDEEMER

# Monday

## Accidental DISCOVERY

WHO: \_\_\_\_\_  
 WHAT: \_\_\_\_\_  
 WHERE: \_\_\_\_\_  
 WHEN: \_\_\_\_\_  
 ART PERIOD: \_\_\_\_\_

WHY OR WHY NOT?

ARTWORK CHARACTERISTICS:

# Tuesday

## What's its SIGNIFICANCE?

ARTWORK TITLE:

- 
- 
- 
- 
- 
- 
- 

WHAT'S YOUR HYPOTHESIS REGARDING HER HEAD? WHY DID THE ARTIST PUT SO MUCH DETAIL THERE?

\_\_\_\_\_  
 \_\_\_\_\_  
 \_\_\_\_\_  
 \_\_\_\_\_

# Wednesday

## MUSEUM

MUSEUM NAME:

LOCATION(S):

- 1.
- 2.
- 3.

WHAT WOULD BE OF INTEREST TO YOU TO EXPLORE AT THE MUSEUM?

\_\_\_\_\_  
 \_\_\_\_\_  
 \_\_\_\_\_  
 \_\_\_\_\_

FUN FACT:

\_\_\_\_\_  
 \_\_\_\_\_  
 \_\_\_\_\_

# Rock & Roll

# THURSDAY

NAME: \_\_\_\_\_  
 LOCATED: \_\_\_\_\_  
 WHAT IS IT? \_\_\_\_\_  
 YEAR BUILT: \_\_\_\_\_  
 HOW WAS IT BUILT? \_\_\_\_\_

SKETCH IT:

HYPOTHESES...

\_\_\_\_\_  
 \_\_\_\_\_  
 \_\_\_\_\_  
 \_\_\_\_\_

HYPOTHESES ASIDE - RESEARCHERS KNOW:

\_\_\_\_\_  
 \_\_\_\_\_

WHAT DO YOU THINK IT WAS USED FOR?

\_\_\_\_\_  
 \_\_\_\_\_

# Friday

## Exploring ELEMENTS & PRINCIPLES

ARTWORK: \_\_\_\_\_

MEDIUM: \_\_\_\_\_

CAN YOU SKETCH IT?

### ELEMENTS

- LINE
- SHAPE
- FORM
- COLOR
- VALUE
- TEXTURE
- SPACE

### PRINCIPLES

- PATTERN
- CONTRAST
- EMPHASIS
- BALANCE
- SCALE
- HARMONY
- RHYTHM/MVMT
- UNITY
- VARIETY

weekly REFLECTION  
IDEAS, THOUGHTS, QUESTIONS, DISCOVERIES

Monday

*Build* THIS

*weekly* REFLECTION  
IDEAS, THOUGHTS, QUESTIONS, DISCOVERIES

Week 3 • Page 8

THURSDAY

*Mistake* or NOT?

WHY 5? EXPLAIN your answer...

---

---

---

---

---

Tuesday

TITLE *this*

SIDE 1 DETAILS/CLUES:

- 
- 
- 
- 

TITLE: \_\_\_\_\_

SIDE 2 DETAILS/CLUES:

- 
- 
- 
- 

TITLE: \_\_\_\_\_

wednesday

archaeOLOGICAL *Discovery*

Item DISCOVERED: \_\_\_\_\_

WHERE YOU CAN SEE IT TODAY:

\_\_\_\_\_

WOULD YOU WANT TO LIVE BY THIS LAW? WHY OR WHY NOT?

\_\_\_\_\_

\_\_\_\_\_

WHAT PART OF THE LAW DO WE USE IN THE USA?

\_\_\_\_\_

DO YOU THINK IT IS A GOOD LAW? WHY OR WHY NOT?

\_\_\_\_\_

\_\_\_\_\_

\_\_\_\_\_

*Duplicate* THIS...

FRIDAY

Monday

Sketch THIS...

Large blank area for sketching.

Tuesday

Tell Us...

Lined area for writing responses.

Wednesday

artwork:

DO YOU THINK THE REQUEST SHOULD BE FULFILLED? WHY OR WHY NOT?

Lined area for writing answers to the Wednesday prompt.

Attention TO DETAILS

SKETCH SOME DETAILS FROM THE ARTWORK:

Large blank area for sketching details from the artwork.

THURSDAY

THE first

art piece: \_\_\_\_\_

THE FIRST: \_\_\_\_\_

WHAT DID HE OVERCOME:

Lined area for writing answers to the Thursday prompt.

WHERE CAN THE ART BE VIEWED:

Line for writing the location of the art.

FRIDAY

WORLD Wonders

WORLD WONDER: \_\_\_\_\_

LOCATION: \_\_\_\_\_

CRAZY FUN FACTS:

Lined area for writing crazy fun facts.

ADD TO YOUR TRAVEL BUCKET LIST? YES or NO

# Museum

## Monday

weekly reflection  
IDEAS, THOUGHTS, QUESTIONS, DISCOVERIES

Name: \_\_\_\_\_

LOCATION: \_\_\_\_\_

DO YOU LIKE THE DESIGN OF THE BUILDING? WHY OR WHY NOT?

\_\_\_\_\_  
\_\_\_\_\_  
\_\_\_\_\_

DO YOU FEEL LIKE IT WILL INCREASE TOURISM? WOULD YOU GO?

\_\_\_\_\_  
\_\_\_\_\_

Week 5 • Page 12

## wednesday

# Character analysis

\_\_\_\_\_  
\_\_\_\_\_  
\_\_\_\_\_  
\_\_\_\_\_  
\_\_\_\_\_  
\_\_\_\_\_  
\_\_\_\_\_  
\_\_\_\_\_

## Friday

# heist

\_\_\_\_\_  
\_\_\_\_\_  
\_\_\_\_\_  
\_\_\_\_\_  
\_\_\_\_\_  
\_\_\_\_\_  
\_\_\_\_\_

## Tuesday

# look alike

### SIMILARITIES

### Differences

- ☞
- ☞
- ☞
- ☞
- ☞
- ☞
- ☞
- ☞
- ☞
- ☞

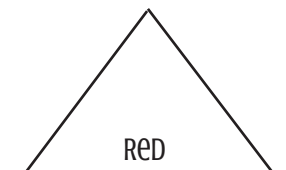
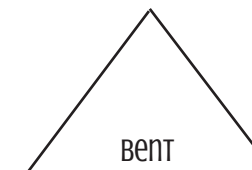
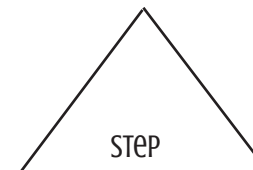
- X
- X
- X
- X
- X
- X
- X
- X
- X
- X

THE RIDDLE OF THE SPHINX - man, BEAST, OR LION. WHICH DO YOU THINK IT RESEMBLES MOST?

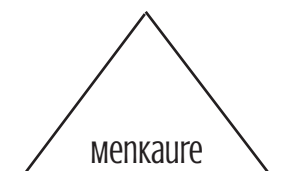
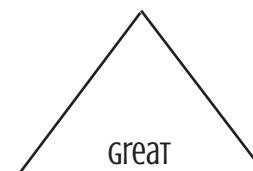
\_\_\_\_\_  
\_\_\_\_\_  
\_\_\_\_\_  
\_\_\_\_\_

## THURSDAY

# Art Comparison



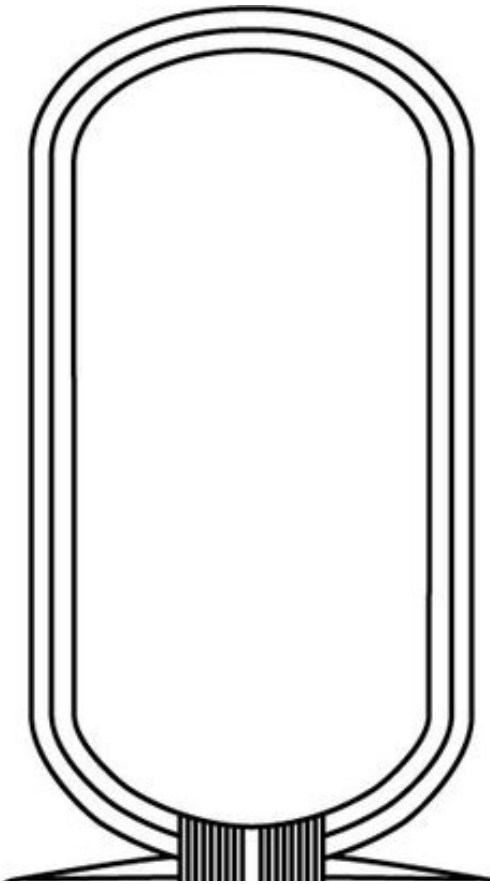
\_\_\_\_\_  
\_\_\_\_\_  
\_\_\_\_\_



\_\_\_\_\_  
\_\_\_\_\_  
\_\_\_\_\_

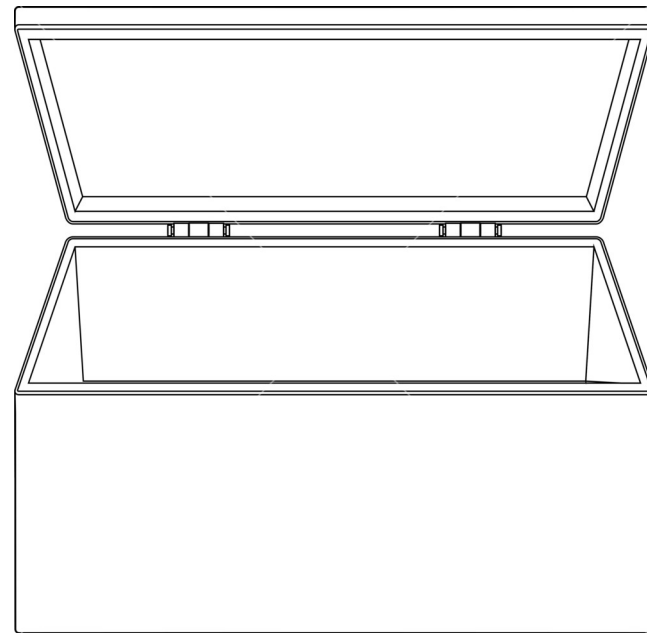
Monday

Write THIS...



Tuesday

Discovery



Design THIS...

Thursday

weekly reflection  
IDEAS, THOUGHTS, QUESTIONS, DISCOVERIES

Week 6 • Page 15

Wednesday

Identify THIS...



Can you identify the following items in the Palette of King Narmer of Hierakonpolis, Egypt?

- Beheaded enemies
- Egypt's unification
- Hathor (Divine Mother)
- Hieroglyphic of Narmer's name
- Horus (Protector of Pharaohs)
- Narmer (Crown of Lower Egypt)
- Narmer (Crown of Upper Egypt)
- Papyrus (Lower Egypt)
- Slain enemies
- Superhuman strength of King

Friday

Explain THIS...

Recipe for: \_\_\_\_\_

1	2	3	4
5	6	7	8



# Museum

## Monday

weekly REFLECTION  
IDEAS, THOUGHTS, QUESTIONS, DISCOVERIES

Name: \_\_\_\_\_

Location: \_\_\_\_\_

DO YOU LIKE THE DESIGN OF THE BUILDING? WHY OR WHY NOT?

\_\_\_\_\_  
\_\_\_\_\_  
\_\_\_\_\_

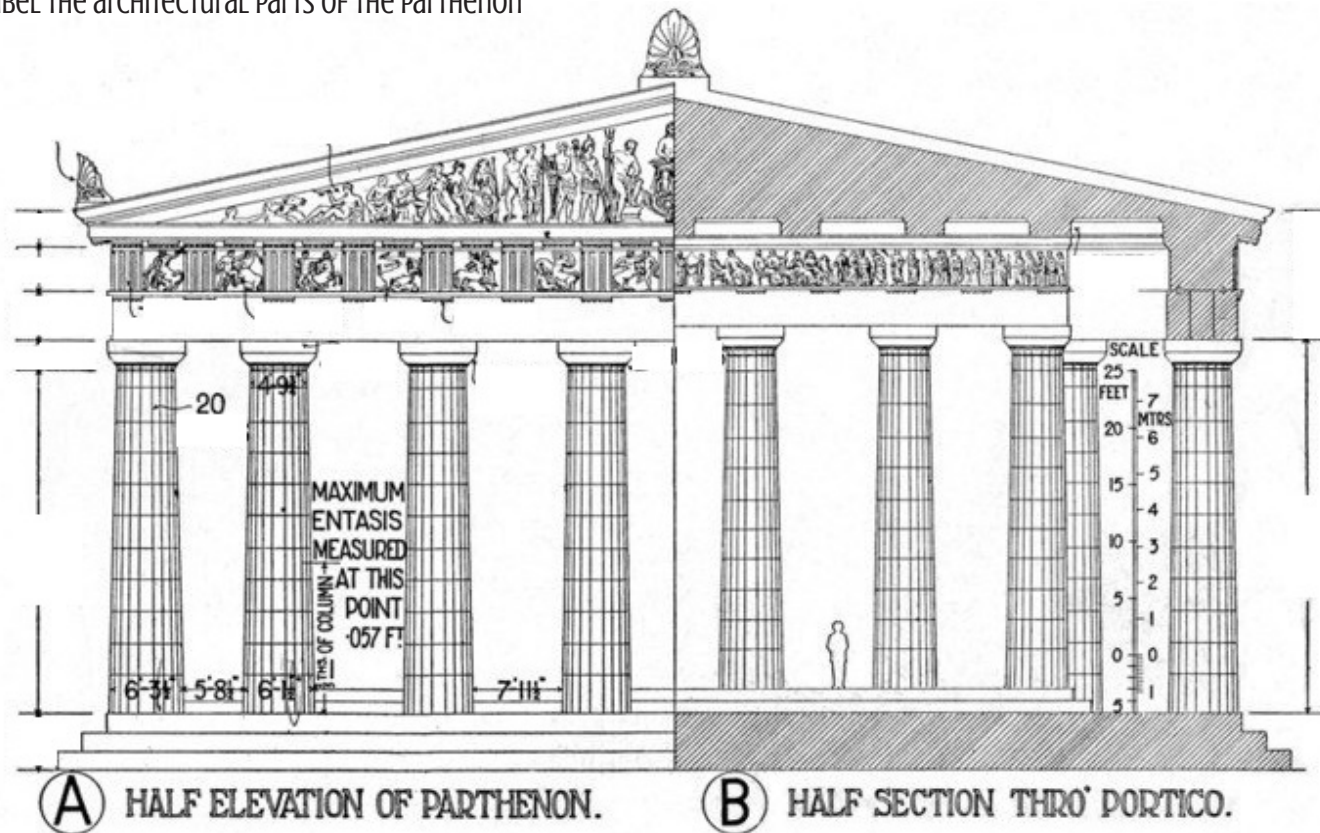
DO YOU FEEL LIKE IT WILL INCREASE TOURISM? WOULD YOU GO?

\_\_\_\_\_  
\_\_\_\_\_

Week 7 • Page 16

## Tuesday identification

LABEL THE ARCHITECTURAL PARTS OF THE PARTHENON



## wednesday

### vocab

\_\_\_\_\_

Define IT: \_\_\_\_\_

\_\_\_\_\_  
\_\_\_\_\_  
\_\_\_\_\_

Draw IT:

## THURSDAY copy-cat

READ ABOUT THE COPY CAT & RESPOND:

Name: \_\_\_\_\_

Location: \_\_\_\_\_

Purpose: \_\_\_\_\_

Challenge: \_\_\_\_\_

HOW CHALLENGE WAS OVERCOME: \_\_\_\_\_

ADD TO YOUR BUCKET TRAVEL LIST? YES OR NO

## Friday

### Rewrite THE QUOTE



# ARTIST *Inspired*

ARTIST:

area FOCUS:

THINGS HE IMPLEMENTED:

- 
- 
- 
- 

## Monday

HOW DID / DO HIS METHODS INFLUENCE ART THEN & NOW?

---

---

---

---

---

---

---

## Tuesday *Sketch* THIS...

SKETCH EACH & LABEL

## Wednesday

archaeological *Discovery*

ALTERNATELY CALLED:

IF YOU COULD DISCOVER SOMETHING, WHAT WOULD YOU WANT TO FIND AND WHY?

---

---

---

---

---

---

---

## THURSDAY

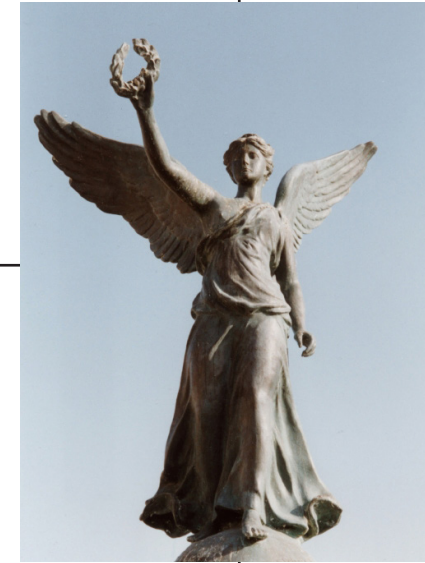
# *Critique*

### FELDMAN'S MODEL OF ART CRITICISM

In the box labeled **Describe**, list the visual qualities of the painting. Next, **Analyze** - identify the elements and principles of art in the piece. Then, **Interpret** the possible meaning or mood conveyed. Finally, make a **Judgement** of the strengths/weaknesses of the artwork; justify why you do or don't like it.

DESCRIBE

ANALYZE



INTERPRET

JUDGEMENT

## FRIDAY

# *Technique* LOST ART

*weekly* REFLECTION  
IDEAS, THOUGHTS, QUESTIONS, DISCOVERIES







# Museum

## Monday

weekly REFLECTION  
IDEAS, THOUGHTS, QUESTIONS, DISCOVERIES

Name: \_\_\_\_\_

LOCATION: \_\_\_\_\_

WHAT IS SIGNIFICANT ABOUT THIS MUSEUM?

---

---

---

IF YOU GO, REMEMBER THIS:

---

---

Week 13 • Page 28

## wednesday

# Sketch THIS...

peace

Energy

Love

BEAUTY

ETERNITY

---

---

---

---

## Tuesday

# Trivia

Name: \_\_\_\_\_

LOCATION: \_\_\_\_\_

RECORD YOUR FAVORITE FACTS:

---

---

---

---

---

---

---

---

---

---

LOOK AT THE SHAPES OF THE BUILDING. SKETCH IT HERE. HOW MANY ELEMENTS & PRINCIPLES OF ART CAN YOU INCLUDE:

## THURSDAY

# World Wonders

WORLD WONDER: \_\_\_\_\_

LOCATION: \_\_\_\_\_

CRAZY FUN FACTS:

---

---

---

---

---

---

---

---

ADD TO YOUR TRAVEL BUCKET LIST? YES or NO

# Invention

## FRIDAY

INVENTION: \_\_\_\_\_

LOCATION: \_\_\_\_\_

WHY IS THIS CONSIDERED ONE OF THE MOST IMPORTANT WORLD INVENTIONS?

---

---

---

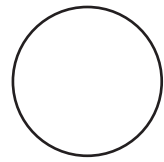
HOW HAS IT AFFECTED YOUR LIFE?

---

---

---

---



# masterpiece

## Monday

artwork: \_\_\_\_\_ BY: \_\_\_\_\_

WHAT'S UNIQUE ABOUT THIS artwork?  
\_\_\_\_\_  
\_\_\_\_\_  
\_\_\_\_\_  
\_\_\_\_\_

SKETCH IT HERE:

## THURSDAY

# Tell Apart

name: \_\_\_\_\_

name: \_\_\_\_\_

CHARACTERISTICS:  
\_\_\_\_\_  
\_\_\_\_\_  
\_\_\_\_\_

CHARACTERISTICS:  
\_\_\_\_\_  
\_\_\_\_\_  
\_\_\_\_\_

THE same:

1. \_\_\_\_\_ 2. \_\_\_\_\_ 3. \_\_\_\_\_ 4. \_\_\_\_\_
5. \_\_\_\_\_ 6. \_\_\_\_\_ 7. \_\_\_\_\_ 8. \_\_\_\_\_

## Tuesday

# Technique

Technique: \_\_\_\_\_  
WHAT WOULD BE CHALLENGING ABOUT THIS TECHNIQUE?

\_\_\_\_\_  
\_\_\_\_\_  
\_\_\_\_\_  
\_\_\_\_\_

WHAT ARE THE BENEFITS OF THIS TECHNIQUE?

\_\_\_\_\_  
\_\_\_\_\_  
\_\_\_\_\_  
\_\_\_\_\_

## wednesday

# Artist Inspiration

ARTIST'S name: \_\_\_\_\_

WHAT'S UNIQUE ABOUT THIS ARTIST?

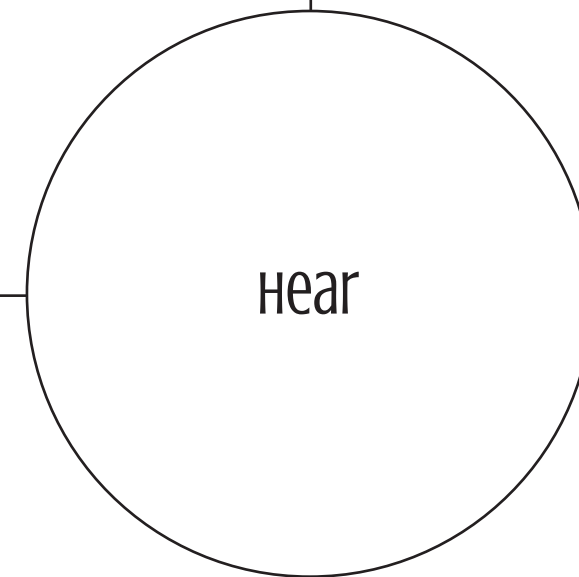
\_\_\_\_\_  
\_\_\_\_\_  
\_\_\_\_\_  
\_\_\_\_\_  
\_\_\_\_\_  
\_\_\_\_\_  
\_\_\_\_\_  
\_\_\_\_\_  
\_\_\_\_\_

# 5 senses in art

## Friday

TASTE

see



TOUCH

smell



Monday

art era

Movement: \_\_\_\_\_

WHO: \_\_\_\_\_

WHAT: \_\_\_\_\_

When: \_\_\_\_\_

Where: \_\_\_\_\_

WHY: \_\_\_\_\_

RESULT: \_\_\_\_\_

4 architectural features: \_\_\_\_\_

\_\_\_\_\_

\_\_\_\_\_

\_\_\_\_\_

wednesday

WORLD Wonders

LOCATION: \_\_\_\_\_

crazy fun facts: \_\_\_\_\_

\_\_\_\_\_

\_\_\_\_\_

\_\_\_\_\_

\_\_\_\_\_

\_\_\_\_\_

\_\_\_\_\_

movie: \_\_\_\_\_

\_\_\_\_\_

ADD TO YOUR TRAVEL BUCKET LIST? YES or NO

Tell Apart Tuesday

TYPE: SKETCH THE SIZE

CHARACTERISTICS:

- 
- 
- 
- 
- 
- 
- 
- 
- 
- 
- 

TYPE: SKETCH THE SIZE

CHARACTERISTICS:

- 
- 
- 
- 
- 
- 
- 
- 
- 
- 
- 

1. \_\_\_\_\_ 2. \_\_\_\_\_ 3. \_\_\_\_\_ 4. \_\_\_\_\_

5. \_\_\_\_\_ 6. \_\_\_\_\_ 7. \_\_\_\_\_ 8. \_\_\_\_\_

THURSDAY

vocab

WORD:

\_\_\_\_\_

DEFINE IT: \_\_\_\_\_

\_\_\_\_\_

DRAW IT:

FRIDAY

Exploring ELEMENTS & PRINCIPLES

weekly reflection  
IDEAS, THOUGHTS, QUESTIONS, DISCOVERIES

name: \_\_\_\_\_

LOCATION: \_\_\_\_\_

SELECT ONE SECTION OF THE ARCHITECTURAL DETAIL AND SKETCH IT:

ELEMENTS

- LINE
- SHAPE
- FORM
- COLOR
- VALUE
- TEXTURE
- SPACE
- PRINCIPLES
- PATTERN
- CONTRAST
- EMPHASIS
- BALANCE
- SCALE
- HARMONY
- RHYTHM/MVMT
- UNITY
- VARIETY

# Identification

YOUR GUESS  
# OF ARCHES

## Monday

WRITE THE NAME & SKETCH IT BELOW:

weekly REFLECTION  
IDEAS, THOUGHTS, QUESTIONS, DISCOVERIES

WEEK 16 • PAGE 34

## Tuesday

# Types

## wednesday

# WORLD Wonders



\_\_\_\_\_

LOCATION: \_\_\_\_\_

IT IS: \_\_\_\_\_

IT IS NOT: \_\_\_\_\_

WHY IS IT SIGNIFICANT: \_\_\_\_\_

\_\_\_\_\_

\_\_\_\_\_

\_\_\_\_\_

ART era: \_\_\_\_\_

WHAT'S UNIQUE ABOUT IT: \_\_\_\_\_

\_\_\_\_\_

\_\_\_\_\_

ADD TO YOUR TRAVEL BUCKET LIST? YES or NO

## THURSDAY

# Shape up

## FRIDAY

# Rewrite THE QUOTE

monday

# Great DEBATE

WHO SHOULD GET THE ORIGINAL?  
WHY?

IF SOMEONE WERE TO WEAR IT TODAY, WHO SHOULD  
IT BE? WHY? WHEN? WHERE?

tuesday

# WORLD Wonders

\_\_\_\_\_

ALSO CALLED: \_\_\_\_\_

LOCATION: \_\_\_\_\_

\_\_\_\_\_

WHY IS IT SIGNIFICANT: \_\_\_\_\_

\_\_\_\_\_

\_\_\_\_\_

\_\_\_\_\_

years: \_\_\_\_\_

WHAT'S AMAZING TO YOU: \_\_\_\_\_

\_\_\_\_\_

\_\_\_\_\_

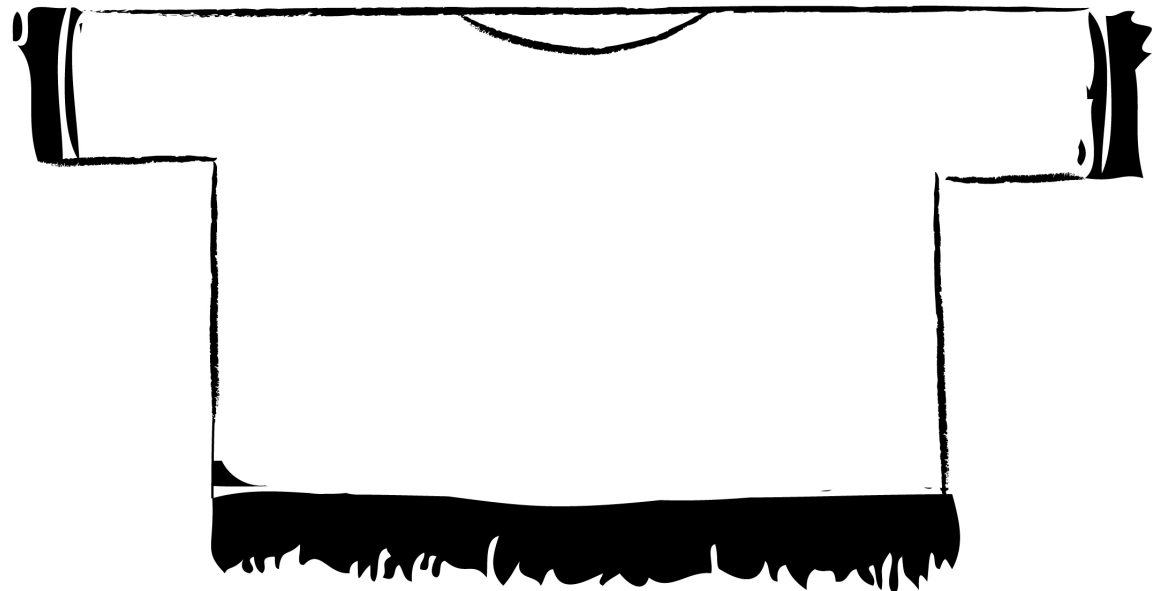
ADD TO YOUR TRAVEL BUCKET LIST? YES or NO

THURSDAY

# Sketch THIS...

wednesday

# Finish THIS...



FRIDAY

# Mystery?

HOW CAN TECHNOLOGY SOLVE ART MYSTERIES OF  
THE PAST? IF YOU COULD STUDY ONE ANCIENT ARTIFACT, WHAT WOULD IT  
BE AND WHAT WOULD YOU WANT TO KNOW?

\_\_\_\_\_

\_\_\_\_\_

\_\_\_\_\_

\_\_\_\_\_

\_\_\_\_\_

\_\_\_\_\_

\_\_\_\_\_

weekly reflection  
IDEAS, THOUGHTS, QUESTIONS, DISCOVERIES

monday

Sketch THIS...

Blank space for sketching.

wednesday

Critique

**FELDMAN'S MODEL OF ART CRITICISM**  
 In the box labeled **Describe**, list the visual qualities of the painting. Next, **Analyze** - identify the elements and principles of art in the piece. Then, **Interpret** the possible meaning or mood conveyed. Finally, make a **Judgement** of the strengths/weaknesses of the artwork; justify why you do or don't like it.

DESCRIBE

analyze



INTERPRET

JUDGEMENT

THURSDAY

WORLD Wonders

\_\_\_\_\_

LOCATION: \_\_\_\_\_

CRAZY FUN FACTS:

\_\_\_\_\_

\_\_\_\_\_

\_\_\_\_\_

\_\_\_\_\_

\_\_\_\_\_

\_\_\_\_\_

ADD TO YOUR TRAVEL BUCKET LIST? YES or NO

FRIDAY

art comparison

\_\_\_\_\_

\_\_\_\_\_

\_\_\_\_\_

\_\_\_\_\_

\_\_\_\_\_

\_\_\_\_\_

\_\_\_\_\_

\_\_\_\_\_

Tuesday

Two in One

weekly REFLECTION  
IDEAS, THOUGHTS, QUESTIONS, DISCOVERIES

WHAT IMPRESSES YOU ABOUT THIS ARTWORK?

\_\_\_\_\_

\_\_\_\_\_

\_\_\_\_\_

\_\_\_\_\_

\_\_\_\_\_

\_\_\_\_\_

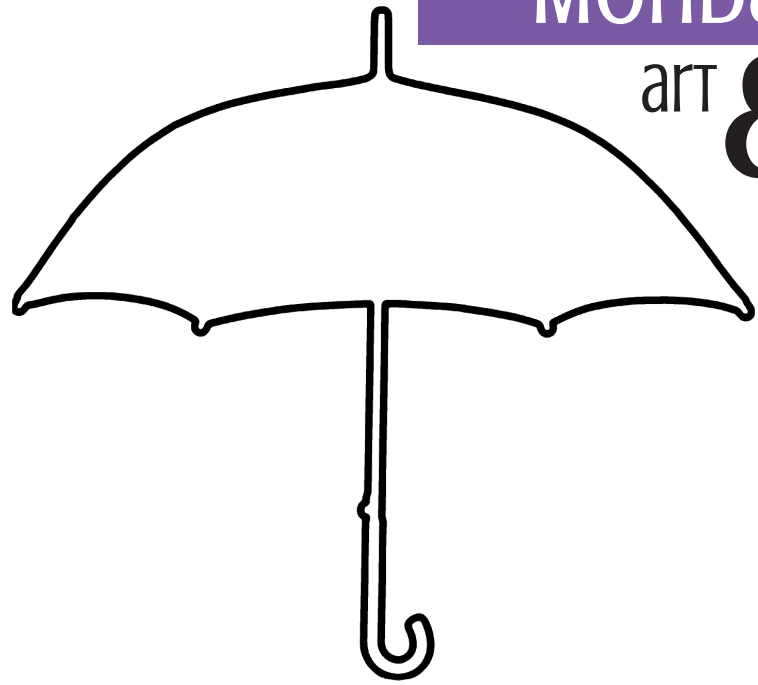
\_\_\_\_\_

\_\_\_\_\_

\_\_\_\_\_

Monday

art Era



weekly REFLECTION  
IDEAS, THOUGHTS, QUESTIONS, DISCOVERIES

WEEK 19 • PAGE 40

Tuesday

Past to present

carolingian period -

weswork -

draw EITHER a CASTLE or a METALWORKING

wednesday

Finish THIS...

FINISH THESE CELTIC KNOTS. WAS IT EASIER TO DRAW ON THE LEFT OR THE RIGHT?



THURSDAY

What's its significance?

WHAT IS SIGNIFICANT TO YOU ABOUT THIS BOOK?

\_\_\_\_\_

\_\_\_\_\_

\_\_\_\_\_

FAVORITE FACTS:

\_\_\_\_\_

\_\_\_\_\_

\_\_\_\_\_

\_\_\_\_\_

\_\_\_\_\_

FRIDAY

Sketch THIS...

design

Monday



THURSDAY

vocab

Empty rectangular box for defining the word.

define it: \_\_\_\_\_

Horizontal line for definition.

Horizontal line for definition.

draw it:

FRIDAY

masterpiece

RESPOND - HOW DID THE KING AND QUEEN INFLUENCE ART?

Multiple horizontal lines for responding to the question.

Tuesday

Piece THIS...

artwork:  
artist:

LEFT DOOR  
READ THIS DOWN

RIGHT DOOR  
READ THIS UP

THEMATIC  
COMPARISONS

LOST  
VS  
GAINED

GREETINGS

TREE  
VS  
TREE

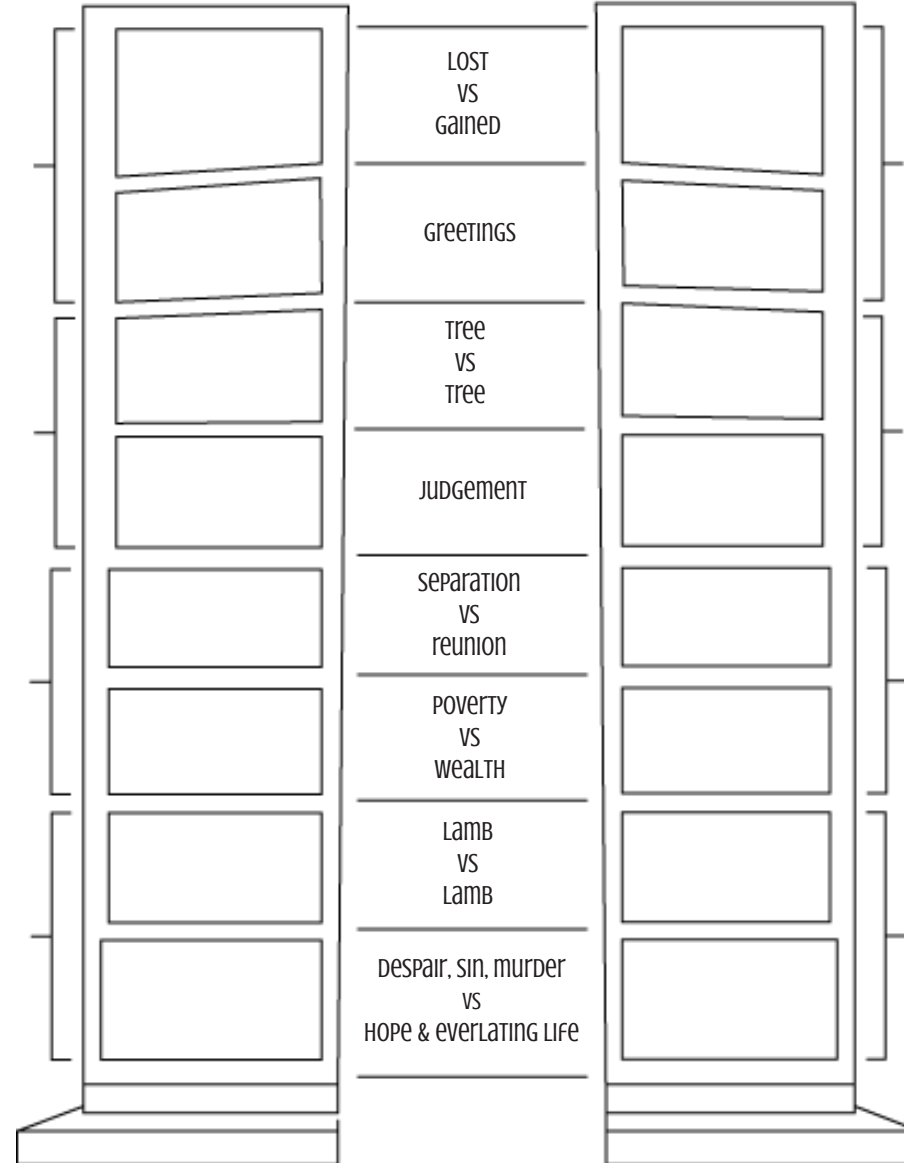
JUDGEMENT

SEPARATION  
VS  
REUNION

POVERTY  
VS  
WEALTH

LAMB  
VS  
LAMB

DESPAIR, SIN, MURDER  
VS  
HOPE & EVERLASTING LIFE



1. FOLLOW THE FOLDING INSTRUCTIONS.
2. DO YOU THINK THIS WAS A GOOD IDEA OR NOT? WHY?

Wednesday

Extra! Extra!



Shape up

Monday

Wednesday

Artist INSPIRATION

name: \_\_\_\_\_

\_\_\_\_\_

\_\_\_\_\_

\_\_\_\_\_

\_\_\_\_\_

quote:

THURSDAY Trivia

quote:

known as: \_\_\_\_\_

\_\_\_\_\_

name: \_\_\_\_\_

\_\_\_\_\_

\_\_\_\_\_

\_\_\_\_\_

Friday

Art Comparison

SIMILARITIES

Differences

⇔

X

⇔

X

⇔

X

⇔

X

⇔

X

⇔

X

⇔

X

⇔

X

⇔

X

⇔

X

WHICH ART PIECE DO YOU PREFER AND WHY?

\_\_\_\_\_

\_\_\_\_\_

Tuesday Search THIS...

weekly REFLECTION  
IDEAS, THOUGHTS, QUESTIONS, DISCOVERIES

# Museum

## Monday

weekly REFLECTION  
IDEAS, THOUGHTS, QUESTIONS, DISCOVERIES

Name: \_\_\_\_\_

LOCATION: \_\_\_\_\_

WHAT IS SIGNIFICANT ABOUT THIS MUSEUM?

\_\_\_\_\_

\_\_\_\_\_

\_\_\_\_\_

IF YOU GO, REMEMBER THIS:

\_\_\_\_\_

\_\_\_\_\_

WEEK 22 • PAGE 46

## wednesday

# Meme THIS...

## THURSDAY

# Art era

Movement: \_\_\_\_\_

Began: \_\_\_\_\_

Primarily: \_\_\_\_\_

WHAT: \_\_\_\_\_

3 Areas: \_\_\_\_\_

\_\_\_\_\_

\_\_\_\_\_

\_\_\_\_\_

Features: \_\_\_\_\_

\_\_\_\_\_

\_\_\_\_\_

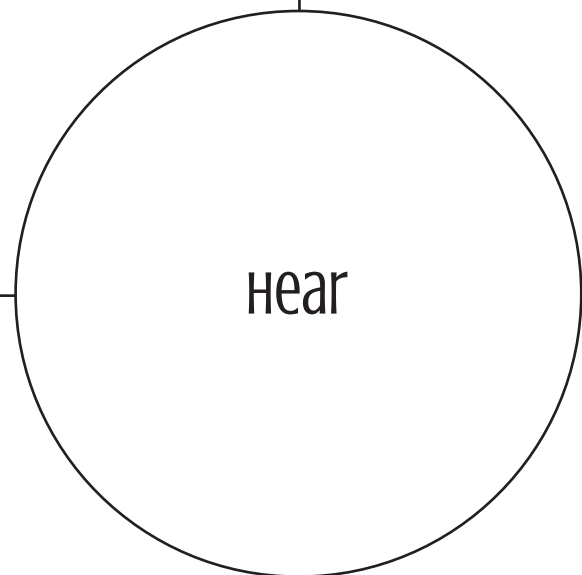
\_\_\_\_\_

# 5 senses in art

## Tuesday

TASTE

see



hear

TOUCH

smell

## FRIDAY

# vocab

\_\_\_\_\_

draw it:

Define it: \_\_\_\_\_

\_\_\_\_\_

\_\_\_\_\_

WHAT CHANGED? \_\_\_\_\_

\_\_\_\_\_

\_\_\_\_\_

\_\_\_\_\_





Monday

Extra! Extra!



weeklyreflection  
Ideas, THOUGHTS, QUESTIONS, DISCOVERIES

Horizontal lines for writing.

Week 24 • Page 50

wednesday

Group THIS...

Horizontal lines for writing.

THURSDAY

heist

READ ABOUT THE HEIST, THEN RECORD

Horizontal lines for writing.

Tuesday

Name THIS...

- 1.                      2.                      3.                      4.
  
- 5.                      6.                      7.                      8.

FRIDAY

Rewrite THE QUOTE

Large blank area for writing.

Monday

Art era

-----

early

venetian

HIGH

expansion & decline

Tuesday

Artist inspiration

weekly reflection  
ideas, thoughts, questions, discoveries

wednesday

Decode THIS...

Item in painting:

Symbol:

\_\_\_\_\_

\_\_\_\_\_

\_\_\_\_\_

\_\_\_\_\_

\_\_\_\_\_

\_\_\_\_\_

\_\_\_\_\_

\_\_\_\_\_

\_\_\_\_\_

\_\_\_\_\_

\_\_\_\_\_

\_\_\_\_\_

\_\_\_\_\_

Thursday

THE first

THE FIRST...

HOW DID THIS CHANGE YOUR WORLD?

\_\_\_\_\_

\_\_\_\_\_

\_\_\_\_\_

\_\_\_\_\_

\_\_\_\_\_

\_\_\_\_\_

\_\_\_\_\_

\_\_\_\_\_

Friday

vocab

\_\_\_\_\_

define it: \_\_\_\_\_

\_\_\_\_\_

\_\_\_\_\_

\_\_\_\_\_

draw it:

Monday

# Art Comparison

SIMILARITIES

DIFFERENCES

- ⇒
- ⇒
- ⇒
- ⇒
- ⇒
- ⇒
- ⇒
- ⇒
- ⇒
- ⇒

- X
- X
- X
- X
- X
- X
- X
- X
- X
- X

can you name the MONTH OF EACH PAINTING AND SPY THE DUC DE BERRY IN THE PAINTINGS?

---



---

## Cast your VOTE... **Tuesday**

BETWEEN THE TWO FINALISTS, WHO WOULD YOU HIRE AND WHY?  
ASPECTS TO CONSIDER...

FINALIST NO. 1 - \_\_\_\_\_

FINALIST NO. 2 - \_\_\_\_\_

## wednesday sketch THIS...

---



---



---



---



---



---

THURSDAY

# Tell Apart

--	--	--

FRIDAY

# Mistake or NOT?

---



---



---



---



---



---

*weekly* REFLECTION  
IDEAS, THOUGHTS, QUESTIONS, DISCOVERIES

ARTIST **Inspired** **Monday**

ARTIST:

CHARACTERISTICS:

- 
- 
- 
- 
- 
- 
- 

*weekly* REFLECTION  
IDEAS, THOUGHTS, QUESTIONS, DISCOVERIES

**THURSDAY** ARTIST **Inspired** ARTIST:

CHARACTERISTICS:

- 
- 
- 
- 
- 

**Tuesday** **Trivia**

PROTECTED OR NOT?

FAVORITE FACT:

**wednesday**

ARTIST **Inspired**

ARTIST:

HIS FAVORITE TYPE OF ART:

WHAT HE DIDN'T FEEL HE COULD DO WELL:

DO YOU THINK HE DID A GOOD JOB, EVEN THOUGH HE DIDN'T WANT TO OR FEEL HE WAS GOOD AT IT?

**FRIDAY** **Search THIS...**



THE SCHOOL OF ATHENS.

*weekly* REFLECTION  
IDEAS, THOUGHTS, QUESTIONS, DISCOVERIES

ARTIST *Inspired*

Monday

ARTIST:

QUOTE:

CHARACTERISTICS:

- 
- 
- 
- 
- 
- 
- 

Tuesday

*Tell Apart*

Empty rectangular box for drawing or writing.

Empty rectangular box for drawing or writing.

Empty rectangular box for drawing or writing.

\_\_\_\_\_

\_\_\_\_\_

\_\_\_\_\_

wednesday

*Decode* THIS...

SKETCH IT:

MEANING:

THURSDAY

*look* ALIKE...

masterpiece

INSPIRATION

Empty rectangular box for drawing or writing.

Empty rectangular box for drawing or writing.

---



---



---



---



---



---



---

FRIDAY

*Decode* THIS...




---



---



---



---



---



---



---

*weekly* REFLECTION  
IDEAS, THOUGHTS, QUESTIONS, DISCOVERIES



# masterpiece

Monday

ARTIST: \_\_\_\_\_

ARTWORK: \_\_\_\_\_

WRITE EACH VISUAL METAPHOR DOWN WHEN YOU FIND IT:

---



---



---



---



---



---



---

## Tuesday ARTIST Inspired

ARTIST: \_\_\_\_\_

NICKNAME: \_\_\_\_\_

WHERE: \_\_\_\_\_

KNOWN FOR: \_\_\_\_\_

---



---



---



---



---

FINISH THIS:  
"A GOOD PAINTER NEEDS ONLY..."

## wednesday Identification

SKETCH AN ANIMAL WITH ADDED TEXTURES:

---



---



---



---



---



---



---

THURSDAY

## BUILDING Evolution

SKETCH THE EVOLUTION BELOW:

---



---



---



---



---



---



---

FRIDAY

## Noodle

weekly REFLECTION  
IDEAS, THOUGHTS, QUESTIONS, DISCOVERIES







Monday

# Artist INSPIRED

THURSDAY

# Critique

FELDMAN'S MODEL OF ART CRITICISM  
In the box labeled **Describe**, list the visual qualities of the painting. Next, **Analyze** - identify the elements and principles of art in the piece. Then, **Interpret** the possible meaning or mood conveyed. Finally, make a **Judgement** of the strengths/weaknesses of the artwork; justify why you do or don't like it.

DESCRIBE

ANALYZE



INTERPRET

JUDGEMENT

Tuesday

# Search THIS...

ARTWORK:

Item:	moral:

Wednesday

# vocab

DEFINE IT: \_\_\_\_\_

---

---

---

DRAW IT:

FRIDAY

# Shape UP

weekly REFLECTION  
IDEAS, THOUGHTS, QUESTIONS, DISCOVERIES

# masterpiece

Monday

ARTIST:

---



---



---



---



---



---



---



---



---



---



Wednesday

# Sketch THIS...

Thursday

# Art era

art era: \_\_\_\_\_

also called: \_\_\_\_\_

influences: \_\_\_\_\_

\_\_\_\_\_

\_\_\_\_\_

characteristics:

\_\_\_\_\_

\_\_\_\_\_

\_\_\_\_\_

\_\_\_\_\_

\_\_\_\_\_

\_\_\_\_\_

Friday

# Meme THIS...

movie: \_\_\_\_\_

\_\_\_\_\_

\_\_\_\_\_

\_\_\_\_\_

\_\_\_\_\_

\_\_\_\_\_

# Tell us

Tuesday

weekly reflection  
IDEAS, THOUGHTS, QUESTIONS, DISCOVERIES



**Monday** ...isms  
in art

Movement: \_\_\_\_\_

When: \_\_\_\_\_

Where: \_\_\_\_\_

Characteristics:

\_\_\_\_\_  
\_\_\_\_\_  
\_\_\_\_\_  
\_\_\_\_\_  
\_\_\_\_\_  
\_\_\_\_\_  
\_\_\_\_\_  
\_\_\_\_\_  
\_\_\_\_\_  
\_\_\_\_\_  
\_\_\_\_\_  
\_\_\_\_\_

**Tuesday** Artist  
INSPIRATION

artist: \_\_\_\_\_

artwork: \_\_\_\_\_

DID THE ARTIST FULFILL HIS PATRON'S request?

WHY OR WHY NOT?

\_\_\_\_\_  
\_\_\_\_\_  
\_\_\_\_\_  
\_\_\_\_\_  
\_\_\_\_\_  
\_\_\_\_\_  
\_\_\_\_\_  
\_\_\_\_\_  
\_\_\_\_\_  
\_\_\_\_\_  
\_\_\_\_\_  
\_\_\_\_\_

**Character** THURSDAY  
analysis

#1 \_\_\_\_\_ #2 \_\_\_\_\_

\_\_\_\_\_  
\_\_\_\_\_  
\_\_\_\_\_  
\_\_\_\_\_  
\_\_\_\_\_  
\_\_\_\_\_

WHO are you more LIKE?

\_\_\_\_\_  
\_\_\_\_\_  
\_\_\_\_\_  
\_\_\_\_\_  
\_\_\_\_\_  
\_\_\_\_\_

**wednesday**

*Finish* THIS...

artwork: \_\_\_\_\_

artist: \_\_\_\_\_

\_\_\_\_\_  
\_\_\_\_\_  
\_\_\_\_\_  
\_\_\_\_\_  
\_\_\_\_\_  
\_\_\_\_\_  
\_\_\_\_\_

**FRIDAY**

*Rewrite* THE QUOTE

\_\_\_\_\_  
\_\_\_\_\_  
\_\_\_\_\_  
\_\_\_\_\_  
\_\_\_\_\_  
\_\_\_\_\_  
\_\_\_\_\_