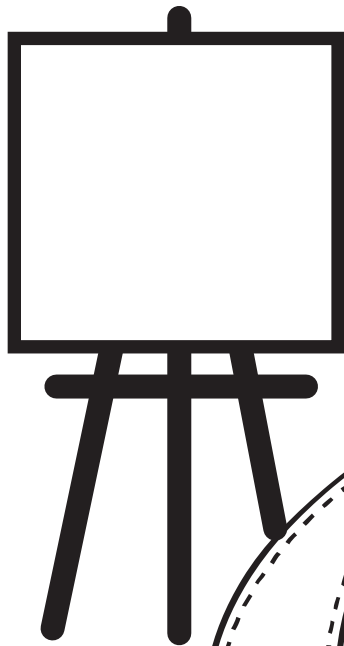


ART WARMUP 



Journal



A FOCUS ON

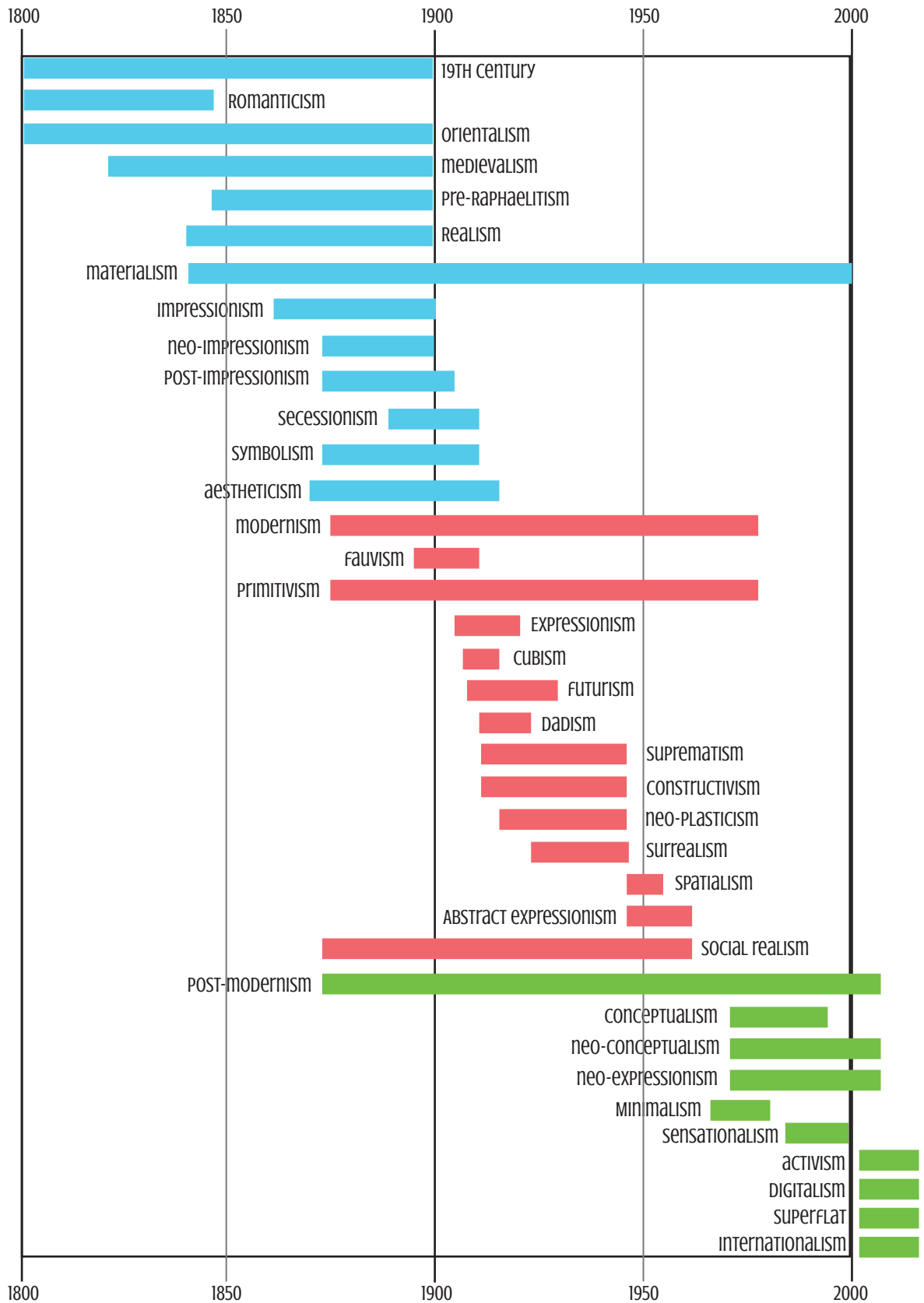
MODERN

art & artists

19TH CENTURY, MODERNISM, & POST-MODERNISM

FOR THE 20 - 20 SCHOOL year

modern art timeline



ART WARMUP Journal

MODERN art & artists

19TH CENTURY 1800-1900	MODERNISM 1900-1970	POST-MODERNISM 1970S-Present
ROMANTICISM ORIENTALISM MEDIEVALISM PRE-RAPHAELITISM REALISM MATERIALISM IMPRESSIONISM NEO-IMPRESSONISM SECESSIONISM AESTHETICISM SYMBOLISM POST-IMPRESSIONISM	FAUVISM PRIMITIVISM EXPRESSIONISM CUBISM FUTURISM DADAISM SUPREMATISM CONSTRUCTIVISM NEO-PLASTICISM SURREALISM SPATIALISM ABSTRACT EXPRESSIONISM SOCIAL REALISM	CONCEPTUALISM NEO-CONCEPTUALISM NEO-EXPRESSIONISM MINIMALISM SENSATIONALISM DIGITALISM ACTIVISM SUPERFLAT INTERNATIONALISM

DELACROIX • BLAKE • FREDRICH • CHIRICO • INGRES • VENETSIA NOV • MILLET • NEAD • COURBET • DAUMIR • BASHKIRTSEFF • RODIN • TISSOT
 HUNT • MORRIS • PEALE • MILLAIS • RIETVELD • WATERHOUSE • FANTIN-LATOURE • GOYA • DEGAS • MANET • MORISOT • CEZANNE • MONET
 RENOIR • PICASSO • ROUSSEAU • SEURAT • KLIMT • GAUGUIN • VAN GOGH • SARGENT • BRAQUE • MALEVICH • KOKOSCHKA • DERAIN
 ANDRE • MARTINEAU • HUNTER • CAILLEBOTTE • LIEBERMANN • KOSZTKA • GIACOMETTI • KIRCHNER • PICABIA • VAN DOESBURG • AFR
 RAY • MURAKAMI • DELAUNAY • MONDRIAN • MUNCH • KANDINSKY • MATISSE • KLEE • MARC • DALI • HOPPER • CHAGALL • DUCHAMP
 JOHNS • RADEBAUGH • STELLA • O'KEEFE • ERNST • MIRO • MAGRITTE • POLLOCK • ROTHKO • KAHLO • LICHTENSTEIN • BOURGEOIS
 MOORE • WARHOL • HIRST • LEMPICKA * KOONING • BASQUIAT • BANKSY • TYPOE • KUSAMA • BALDESSARI • LARAMEE • CLOSE • KOONS

19TH Century
1800-1900

ROMANTICISM
ORIENTALISM
MEDIVALISM
PRE-RAPHAELITISM
REALISM
MATERIALISM
IMPRESSIONISM
NEO-IMPRESSIONISM
SECESSIONISM
AESTHETICISM
SYMBOLISM
POST-IMPRESSIONISM

In your
own *words*

art movement
DESCRIPTIVE WORDS

art movement
DESCRIPTIVE WORDS

In your
own *words*

MODERNISM
1900-1970

Fauvism
PRIMITIVISM
EXPRESSIONISM
CUBISM
FUTURISM
DADAISM
SUPREMATISM
CONSTRUCTIVISM
NEO-PLASTICISM
DE STIJL
SURREALISM
SPATIALISM
ABSTRACT EXPRESSIONISM
SOCIAL REALISM

Monday

Artist INSPIRATION

ARTIST:

Tuesday ...isms

In art

Movement: _____

Definition: _____

When: _____

Where: _____

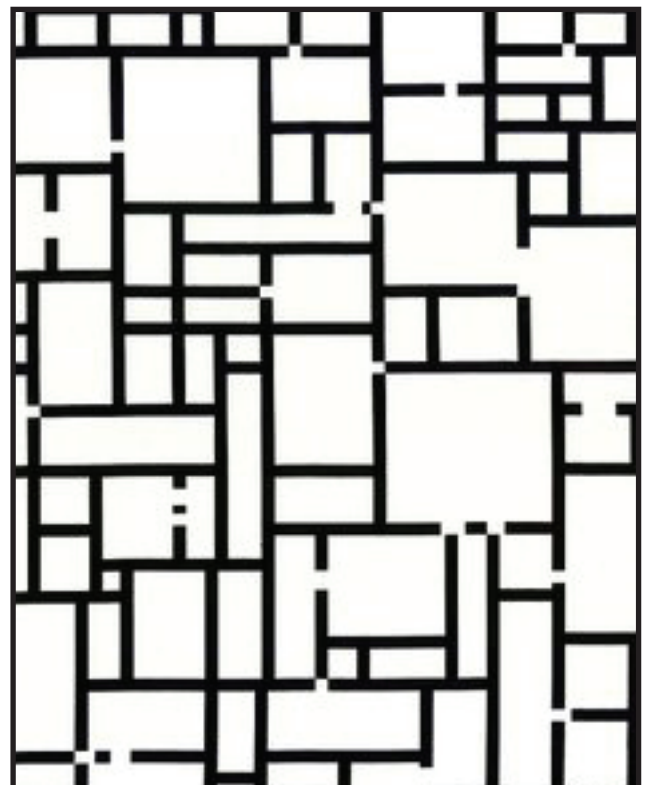
Influence: _____

CHARACTERISTICS:

CONTRIBUTING ARTISTS:

wednesday

Sketch THIS...



Search THIS...

THURSDAY

FIND THE ELEMENTS AND PRINCIPLES OF ART IN ANY DIRECTION:

- »→ Balance
- »→ color
- »→ contrast
- »→ elements
- »→ emphasis
- »→ form
- »→ harmony
- »→ line
- »→ movement
- »→ pattern
- »→ principles
- »→ rhythm
- »→ scale
- »→ shape
- »→ space
- »→ texture
- »→ unity
- »→ value
- »→ variety

Z E C M Y H Z Y N P N S H D Z
 O E O O O A X I D Y T U D L T
 H J L S E V C O K N L V C S S
 A F O H Z M E R E K J I P S A
 R O R A W F P M L B V P A C R
 M A A P O B E H E S W M T A T
 O O F E D L P K A N F R T L N
 N Y G C E D U I Q S T O E E O
 Y U H N L I N E R A I F R Y C
 S N C A V A R I E T Y S N T H
 N I B L F E R U T X E T V T U
 P T X A J S V A L U E V V A C
 I Y S B D S E L P I C N I R P
 I D A O Q K H O E C A P S C Q
 X M H T Y H R F S W Z G N B Y

FRIDAY

Exploring ELEMENTS & PRINCIPLES

weekly reflection
ideas, thoughts, questions, discoveries

ELEMENTS

- LINE
- SHAPE
- FORM
- COLOR
- VALUE
- TEXTURE
- SPACE

PRINCIPLES

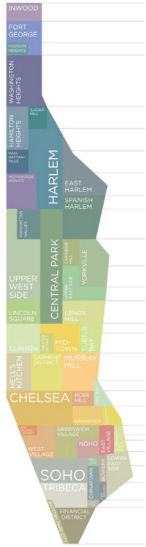
- PATTERN
- CONTRAST
- EMPHASIS
- BALANCE
- SCALE
- HARMONY
- RHYTHM/MVMT
- UNITY
- VARIETY

Museum

Monday

weekly REFLECTION
IDEAS, THOUGHTS, QUESTIONS, DISCOVERIES

mark the
museum's
LOCATION in
NYC BELOW



name: _____

LOCATION: _____

featured art: _____

FUN FACT: _____

Week 2 • Page 8

Tuesday *Trivia*

wednesday *Story* PROMPT... Draw what you imagine.

THURSDAY

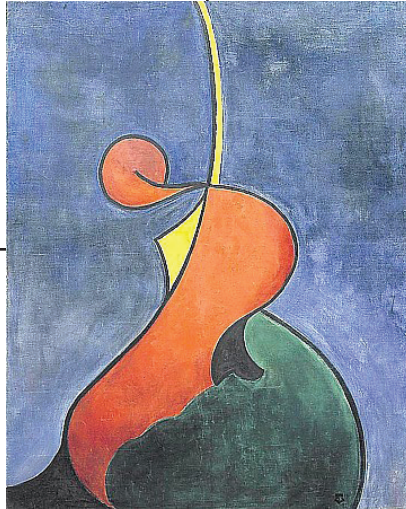
Critique

FELDMAN'S MODEL OF ART CRITICISM

In the box labeled **Describe**, list the visual qualities of the painting. Next, **Analyze** - identify the elements and principles of art in the piece. Then, **Interpret** the possible meaning or mood conveyed. Finally, make a **Judgement** of the strengths/weaknesses of the artwork; justify why you do or don't like it.

DESCRIBE

ANALYZE



INTERPRET

JUDGEMENT

FRIDAY

Memory Drawing

masterpiece

Monday

ARTIST:

WHAT'S UNIQUE ABOUT THIS ARTIST / ARTWORK?

Snail mail

Tuesday

weekly reflection
IDEAS, THOUGHTS, QUESTIONS, DISCOVERIES



Wednesday

Vocab

Define it: _____

Draw it:

THURSDAY

heist

READ ABOUT THE HEIST, THEN RECORD

FRIDAY

Rewrite THE QUOTE

5 senses in art

Monday

TASTE

see

Hear

TOUCH

smell

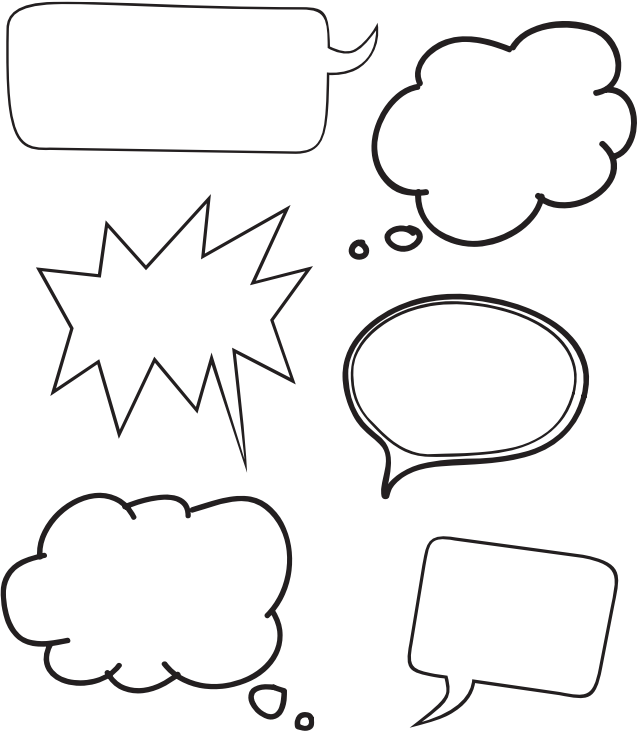
Tuesday

design

weekly REFLECTION
IDEAS, THOUGHTS, QUESTIONS, DISCOVERIES

Wednesday

Tell me THIS...



Thursday

Shape up

Friday

Art Comparison

SIMILARITIES

Differences

-
-
-
-
-
-
-
-
-
-
-

- X
- X
- X
- X
- X
- X
- X
- X
- X
- X
- X

WHICH ART PIECE DO YOU PREFER AND WHY?

ARTIST-*Inspired*

Monday

1. WHAT TYPE OF OBSTACLES DID CHUCK CLOSE FACE IN HIS LIFE?

2. HOW CAN YOU APPLY CHUCK CLOSE'S RESILIENCE TO YOUR OWN LIFE?

WRITE YOUR FAVORITE CHUCK CLOSE QUOTE HERE.

Tuesday



are art galleries a thing of the past? Will it make a difference if they are no

longer supported by artists? What could be the long-term effect of this trend? Why do you think this transition is happening?

wednesday

Habit OF MIND

WRITE THE HABIT OF MIND:

WRITE 3 CONSTRUCTIVE PEER CRITIQUE FOLLOW-UP QUESTIONS USING SKILLS, TECHNIQUES, OR RECOGNITION OF E&P OF ART.

THURSDAY

Tell Apart



ARTIST _____

MOVEMENT _____

BIRTH _____

DEATH _____

NATIONALITY _____

FIELD _____

CHARACTERISTICS _____

ARTIST _____

MOVEMENT _____

BIRTH _____

DEATH _____

NATIONALITY _____

FIELD _____

CHARACTERISTICS _____

Obj. A - WHICH ARTIST PAINTED THE IMAGE?

1. ____ 2. ____ 3. ____ 4. ____ 5. ____ 6. ____

FRIDAY

Doodle

weekly REFLECTION

IDEAS, THOUGHTS, QUESTIONS, DISCOVERIES

Monday

Artist INSPIRATION

ARTIST:

Tuesday ...isms

In art

Movement: _____

DEFINITION: _____

WHEN: _____

WHERE: _____

INFLUENCE: _____

CHARACTERISTICS:

CONTRIBUTING ARTISTS:

wednesday

Sketch THIS...

Search THIS...

THURSDAY

FRIDAY

Exploring ELEMENTS & PRINCIPLES

weekly REFLECTION
Ideas, THOUGHTS, QUESTIONS, DISCOVERIES

IDENTIFY THE ELEMENTS AND PRINCIPLES OF JUAN MIRO'S ILLUSTRATIONS. WHAT MAKES THEM INTERESTING AND WHY?

DRAW YOUR OWN LINE DRAWING BY COMBINING SHAPES & ADDING PATTERNS. THINK OF CONTRAST WHEN ADDING COLOR.



ELEMENTS

- LINE
- SHAPE
- FORM
- COLOR
- VALUE
- TEXTURE
- SPACE

PRINCIPLES

- PATTERN
- CONTRAST
- EMPHASIS
- BALANCE
- SCALE
- HARMONY
- RHYTHM/MVMT
- UNITY
- VARIETY

Museum

Monday

weekly reflection
IDEAS, THOUGHTS, QUESTIONS, DISCOVERIES

name: _____

name: _____

LOCATION: _____

LOCATION: _____

FEATURED ART: _____

FEATURED ART: _____

FUN FACT: _____

FUN FACT: _____

Week 8 • Page 20

Tuesday Trivia

- PICASSO'S BIRTH WAS UNIQUE BECAUSE HE:
A. WAS A TWIN C. WAS PRONOUNCED DEAD
B. WAS PREMATURE D. WEIGHED 12 LBS.
- PABLO'S GIVEN NAME WAS HOW MANY WORDS LONG?
A. 2 C. 4
B. 12 D. 23
- WHAT WAS PABLO'S FIRST WORD?
A. PENCIL C. DAD
B. MOM D. PAPER
- HOW OLD WAS PICASSO WHEN HE FINISHED HIS FIRST PAINTING?
A. 7 C. 13
B. 9 D. 15
- HOW OLD WAS HE WHEN HE HAD HIS FIRST EXHIBIT?
A. 7 C. 13
B. 9 D. 15
- DESCRIBE PICASSO AS A STUDENT.
A. TEACHER'S PET C. MATHEMATICIAN
B. DISRUPTIVE D. LAZY
- LATER, PICASSO ALSO ENJOYED...
A. READING C. MATH
B. WRITING D. HISTORY
- HOW MANY WORKS OF ART DID PICASSO MAKE IN HIS LIFE?
A. 50,000 C. 5,000
B. 500 D. 50

Wednesday Story Prompt...

Draw what you imagine.

THURSDAY

Critique

FELDMAN'S MODEL OF ART CRITICISM

In the box labeled **Describe**, list the visual qualities of the painting. Next, **Analyze** - identify the elements and principles of art in the piece. Then, **Interpret** the possible meaning or mood conveyed. Finally, make a **Judgement** of the strengths/weaknesses of the artwork; justify why you do or don't like it.

DESCRIBE

ANALYZE



INTERPRET

JUDGEMENT

FRIDAY

Memory Drawing

masterpiece

Monday

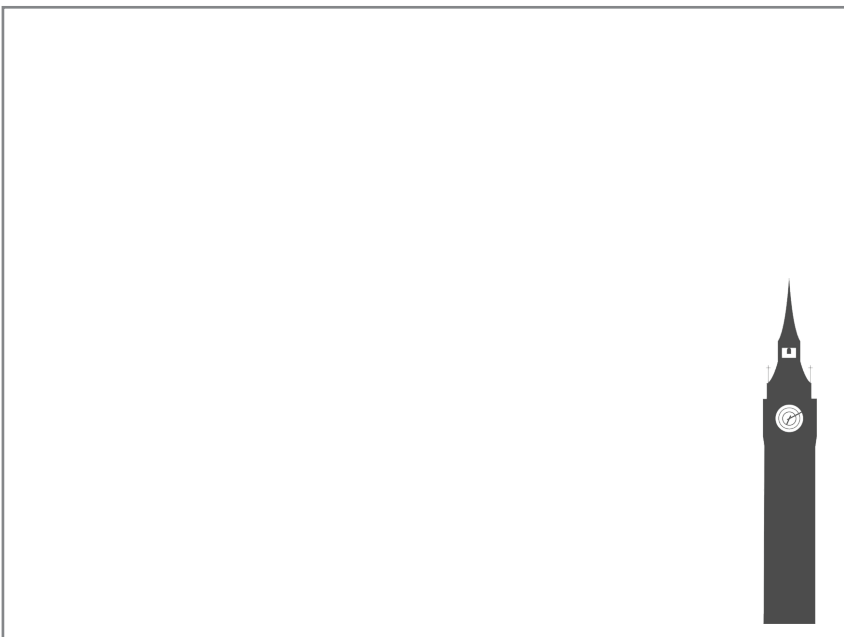
ARTIST:

WHAT'S UNIQUE ABOUT THIS ARTIST / ARTWORK?

Snail mail

Tuesday

weekly reflection
IDEAS, THOUGHTS, QUESTIONS, DISCOVERIES



Wednesday

Vocab

Define it: _____

Draw it:

THURSDAY

heist

READ ABOUT THE HEIST, THEN RECORD
WHETHER YOU THINK THE POLICE HAVE THE RIGHT PEOPLE OR
NOT.

FRIDAY

Rewrite THE QUOTE

5 senses in art

Monday

TASTE

see

Hear

TOUCH

smell

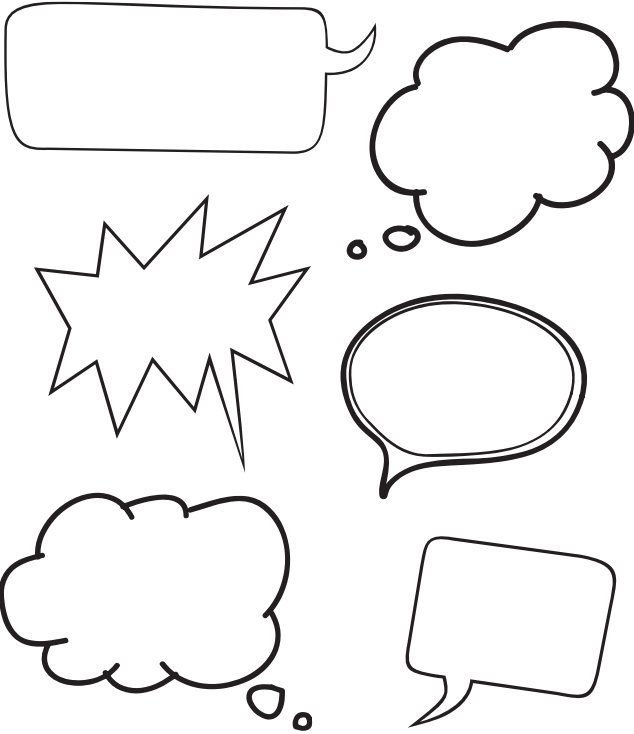
Tuesday

design

weekly reflection
IDEAS, THOUGHTS, QUESTIONS, DISCOVERIES

Wednesday

Tell me THIS...



Thursday

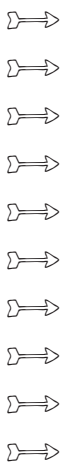
Shape up

Friday

Art Comparison

SIMILARITIES

Differences



WHICH ART PIECE DO YOU PREFER AND WHY?

ARTIST-*Inspired*

Monday

ARTIST: _____

Tuesday



Extra! Extra!

Wednesday

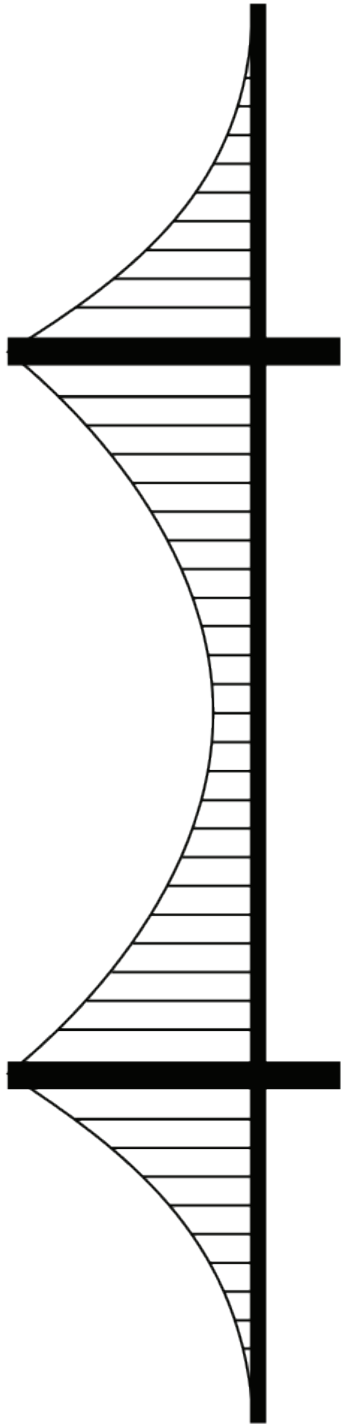
Habit OF MIND

WRITE THE HABIT OF MIND:

WRITE IDEAS FOR HOW TO STRENGTHEN THIS SKILL:

THURSDAY

Tell Apart



FRIDAY

Doodle

weekly REFLECTION
IDEAS, THOUGHTS, QUESTIONS, DISCOVERIES

Monday

Artist INSPIRATION

QUOTE:

ARTIST:

Tuesday ...isms

In art

Movement: _____

DEFINITION: _____

WHEN: _____

WHERE: _____

INFLUENCE: _____

CHARACTERISTICS:

CONTRIBUTING ARTISTS:

wednesday

Sketch THIS...

Search THIS...

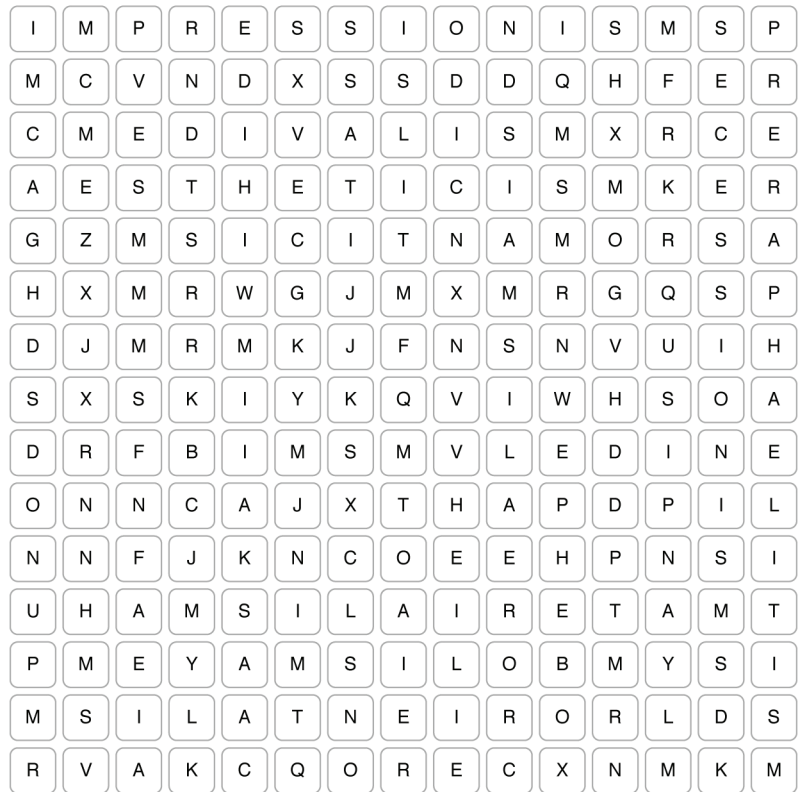
THURSDAY

19TH CENTURY ART
1800-1900

ROMANTICISM
ORIENTALISM
MEDIÉVALISM
PRE-RAPHAELITISM
REALISM
MATERIALISM
IMPRESSIONISM
SECESSIONISM
AESTHETICISM
SYMBOLISM

(NOT INCLUDED IN PUZZLE)

NEO-IMPRESSIONISM
POST-IMPRESSIONISM



FRIDAY

Exploring ELEMENTS & PRINCIPLES

AFTER IDENTIFYING THE ELEMENTS AND PRINCIPLES,
EXPLAIN THE MOOD THAT THEY CREATE. HOW DOES THE
WEATHER FEEL AT THAT MOMENT?

ELEMENTS

- LINE
- SHAPE
- FORM
- COLOR
- VALUE
- TEXTURE
- SPACE

PRINCIPLES

- PATTERN
- CONTRAST
- EMPHASIS
- BALANCE
- SCALE
- HARMONY
- RHYTHM/MVMT
- UNITY
- VARIETY

weekly REFLECTION
IDEAS, THOUGHTS, QUESTIONS, DISCOVERIES

Museum

Monday

name: _____

Location: _____

featured art: _____

FUN FACT: _____

weekly REFLECTION
IDEAS, THOUGHTS, QUESTIONS, DISCOVERIES

Week 14 • Page 32

Tuesday *Trivia*

LIST THE FACTS MOST INTERESTING / UNIQUE TO YOU:

WHICH ANGLE OF THE BUILDING WOULD BE THE MOST INTERESTING TO EXPERIENCE (AERIAL/GROUND) AND WHY?

wednesday

Story PROMPT...

Draw what you imagine.

THURSDAY

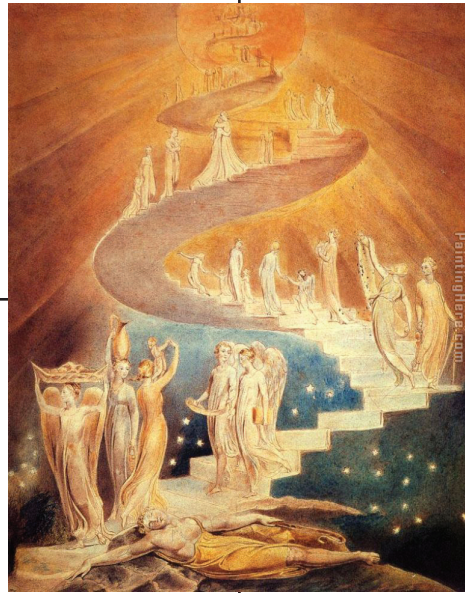
Critique

FELDMAN'S MODEL OF ART CRITICISM

In the box labeled **Describe**, list the visual qualities of the painting. Next, **Analyze** - identify the elements and principles of art in the piece. Then, **Interpret** the possible meaning or mood conveyed. Finally, make a **Judgement** of the strengths/weaknesses of the artwork; justify why you do or don't like it.

DESCRIBE

ANALYZE



INTERPRET

JUDGEMENT

FRIDAY

Memory Drawing

masterpiece

ARTIST: _____

WHAT'S UNIQUE ABOUT THIS ARTIST / ARTWORK?

Monday

"There, on the pendent boughs her coronet weeds
Clambering to hang, an envious sliver broke;
When down her weedy trophies and herself
Fell in the weeping brook. Her clothes spread wide,
And, mermaid-like, awhile they bore her up;
Which time she chanted snatches of old tunes,
As one incapable of her own distress,
Or like a creature native and indued
Unto that element; but long it could not be
Till that her garments, heavy with their drink,
Pull'd the poor wretch from her melodious lay
To muddy death."
- William Shakespeare
Hamlet, Act IV, Scene VII

Snail mail

Tuesday

weekly reflection
IDEAS, THOUGHTS, QUESTIONS, DISCOVERIES



Wednesday

Vocab

Define it: _____

Draw it:

THURSDAY

heist

READ ABOUT THE HEIST, THEN RECORD

FRIDAY

Rewrite THE QUOTE

5 senses in art

Monday

TASTE

see

Hear

TOUCH

smell

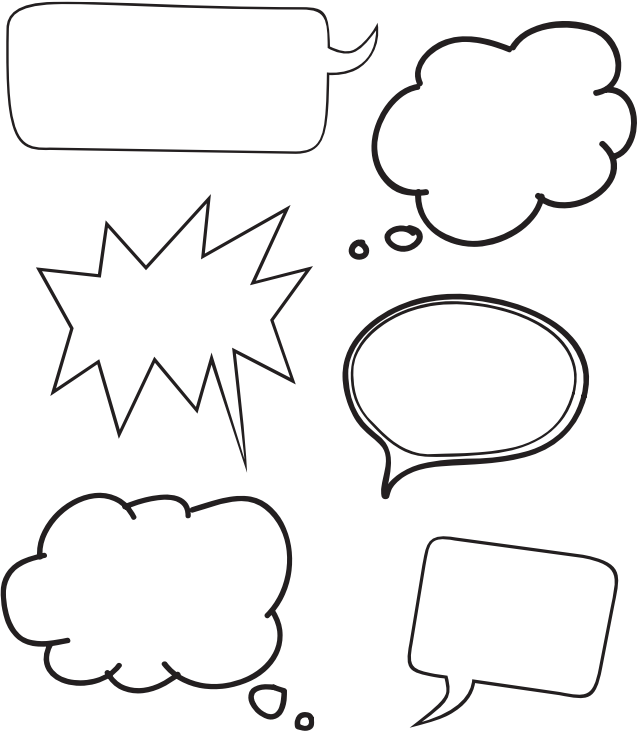
Tuesday

design

weekly reflection
IDEAS, THOUGHTS, QUESTIONS, DISCOVERIES

Wednesday

Tell me THIS...



Thursday

Shape up

Friday

Art Comparison

SIMILARITIES

Differences

-
-
-
-
-
-
-
-
-
-
-

- X
- X
- X
- X
- X
- X
- X
- X
- X
- X
- X

WHICH ART PIECE DO YOU PREFER AND WHY?

Wednesday

Finish THIS...



THURSDAY

Character analysis

FRIDAY

\$ WHAT IS IT'S *Worth*

WHICH one WOULD you BID on and WHY?

MATCH THE SOLD BID WITH THE CORRECT PIECE OF ART.

\$365,000 USD

£368,750 GBP

£409,250 GBP

\$545,000 USD

£578,500 GBP

\$845,000 USD

1. _____

2. _____

3. _____

4. _____

5. _____

6. _____

ARTIST-*Inspired*

HIS CAREER WAS DIVIDED
INTO TWO PARTS...

Monday

ARTIST:

Tuesday



Extra! Extra!

AFTER READING THE ARTICLE, LIST
THE PROS AND CONS OF THE BOOK
AND THE EXHIBIT. WHAT IS YOUR VOTE?

PROS:

CONS:

--	--

FOR

AGAINST

Wednesday

Habit OF MIND

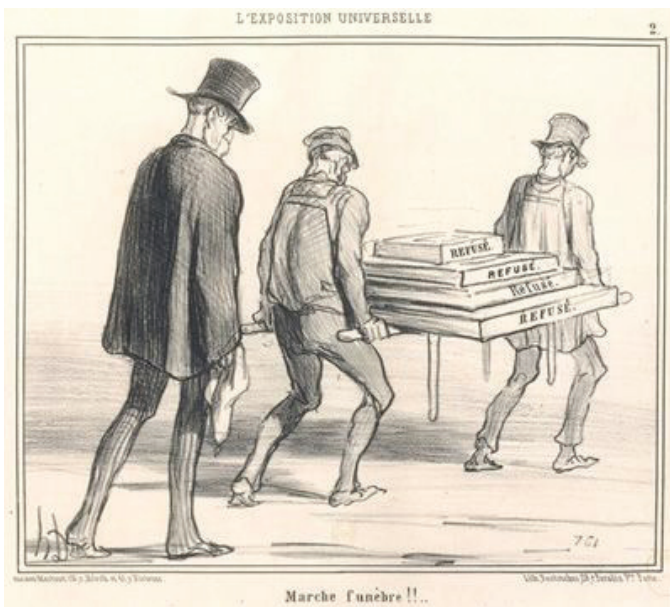
WRITE THE HABIT OF MIND:

WRITE IDEAS FOR HOW TO STRENGTHEN THIS SKILL:

THURSDAY

Tell Apart THE _____?

WHY WAS IT SO IMPORTANT TO BE ACCEPTED THERE?



FUNERAL MARCH, HONORÉ DAUMIER, 1855:
AN ARTIST IS LEAVING THE SALON JURY

FRIDAY

Noodle

weekly REFLECTION

IDEAS, THOUGHTS, QUESTIONS, DISCOVERIES

Monday

Artist INSPIRATION

ARTIST:



QUOTE:

Tuesday ...isms

In art

Movement: _____

Definition: _____

When: _____

Where: _____

Influence: _____

CHARACTERISTICS:

CONTRIBUTING ARTISTS:

wednesday

Sketch THIS...

Search THIS...

THURSDAY

WHAT DID HUNT DECIDE TO CHANGE FROM HIS FIRST DRAFT TO HIS FINAL DRAFT? DID THE CHANGES ENHANCE THE PIECE? WHY OR WHY NOT?

scene sketch

FINAL PAINTING

FRIDAY

Exploring ELEMENTS & PRINCIPLES

OBSERVE WILLIAM MORRIS' TAPESTRY, STRAWBERRY THIEF. WHICH ELEMENTS AND PRINCIPLES OF ART CAN YOU IDENTIFY? DRAW YOUR OWN TAPESTRY.

ELEMENTS

- LINE
- SHAPE
- FORM
- COLOR
- VALUE
- TEXTURE
- SPACE

PRINCIPLES

- PATTERN
- CONTRAST
- EMPHASIS
- BALANCE
- SCALE
- HARMONY
- RHYTHM/MVMT
- UNITY
- VARIETY

weekly REFLECTION
IDEAS, THOUGHTS, QUESTIONS, DISCOVERIES

THURSDAY

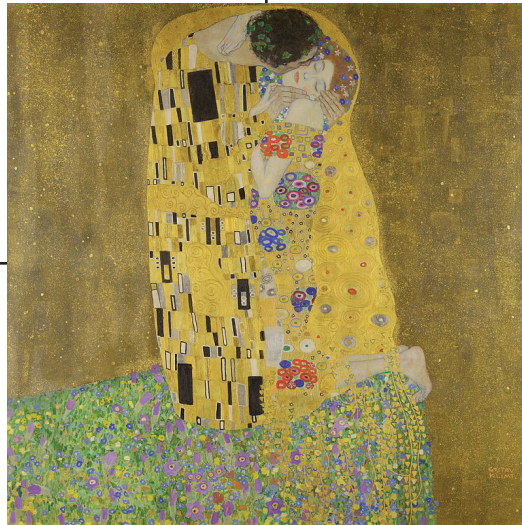
Critique

FELDMAN'S MODEL OF ART CRITICISM

In the box labeled **Describe**, list the visual qualities of the painting. Next, **Analyze** - identify the elements and principles of art in the piece. Then, **Interpret** the possible meaning or mood conveyed. Finally, make a **Judgement** of the strengths/weaknesses of the artwork; justify why you do or don't like it.

DESCRIBE

ANALYZE



INTERPRET

JUDGEMENT

FRIDAY

Memory Drawing

masterpiece

Monday

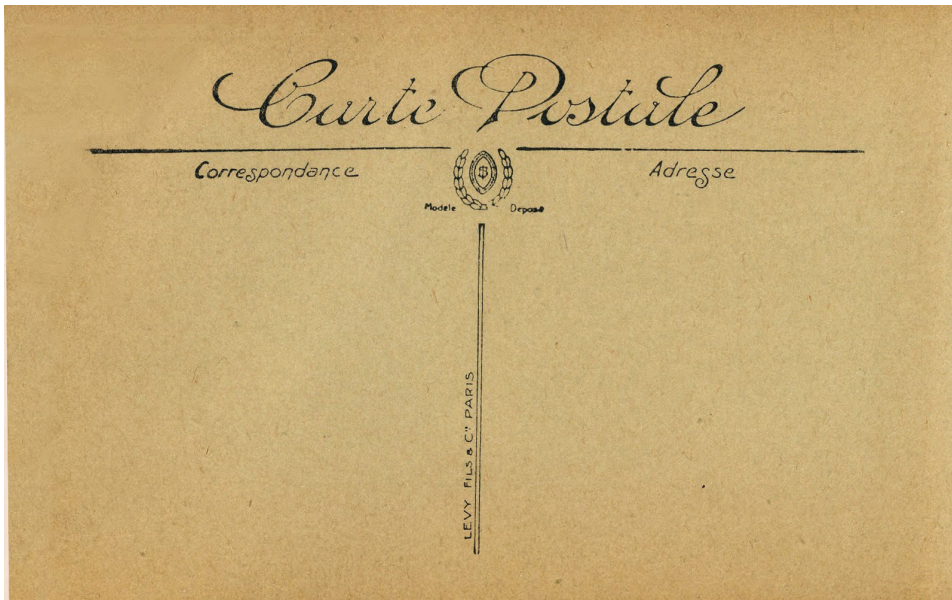
ARTIST:

WHAT'S UNIQUE ABOUT THIS ARTIST / ARTWORK?

Snail mail

Tuesday

weekly reflection
IDEAS, THOUGHTS, QUESTIONS, DISCOVERIES



Wednesday

Vocab

Define it: _____

Draw it:

WOULD YOU PREFER PAINTING EN PLEIN AIR OR IN A STUDIO? WHY?

THURSDAY

heist

READ ABOUT THE HEIST, THEN RECORD
HOW YOU WOULD INVESTIGATE HOW THE ARTWORK GOT THERE?

FRIDAY

Rewrite THE QUOTE

5 senses in art

Monday

TASTE

see

Hear

TOUCH

smell

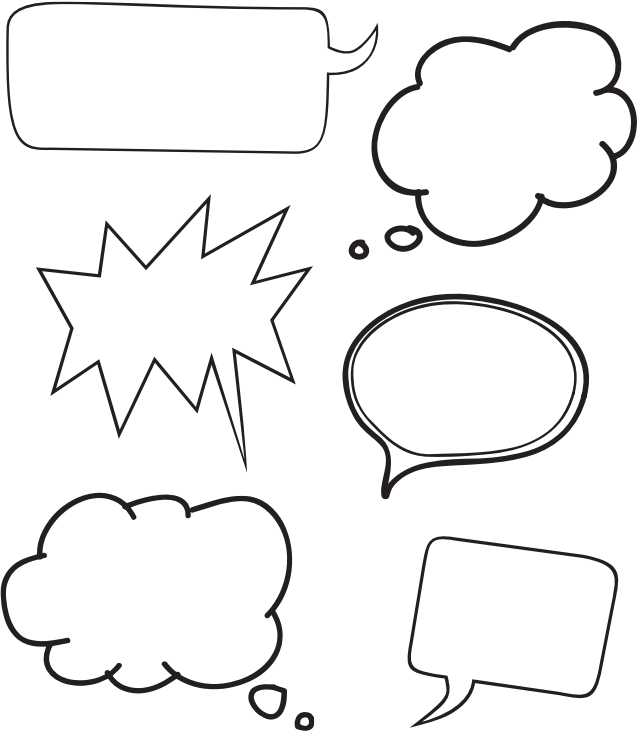
Tuesday

design

weekly reflection
IDEAS, THOUGHTS, QUESTIONS, DISCOVERIES

Wednesday

Tell me THIS...



Thursday

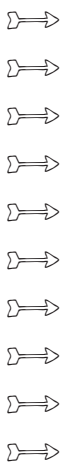
Shape up

Friday

Art Comparison

SIMILARITIES

Differences



WHICH ART PIECE DO YOU PREFER AND WHY?

ARTIST-*Inspired*

Monday

HOW WOULD YOU DESCRIBE HIS PERSONALITY? WHY?

ARTIST:

Tuesday



Extra! Extra!

WHAT DISCOVERIES WERE MADE BECAUSE OF THE RESTORATION?

WHAT DISCOVERIES WERE MADE BECAUSE OF THE RESTORATION?

wednesday

Habit OF MIND

WRITE THE HABIT OF MIND:

WRITE IDEAS FOR HOW TO STRENGTHEN THIS SKILL:

Monday

Artist INSPIRATION

WHAT DO YOU THINK HIS FAVORITE ELEMENT OF ART WAS:

ARTIST:

Tuesday ...isms

In art

Movement: _____

Definition: _____

When: _____

Where: _____

Influence: _____

CHARACTERISTICS:

CONTRIBUTING ARTISTS:

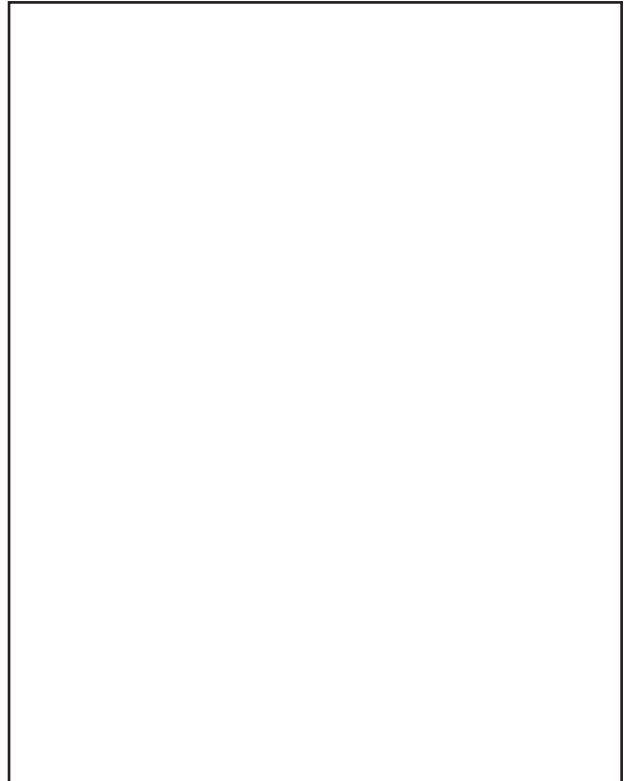
wednesday

Sketch THIS...

Search THIS...

THURSDAY

Make your own HIDDEN PICTURE...



FRIDAY

Exploring ELEMENTS & PRINCIPLES

After examining Franz Marc's painting, make your own and include the same elements and principles of art.

ELEMENTS

- LINE
- SHAPE
- FORM
- COLOR
- VALUE
- TEXTURE

PRINCIPLES

- PATTERN
- CONTRAST
- EMPHASIS
- BALANCE
- SCALE
- HARMONY
- RHYTHM/MVMT
- UNITY
- VARIETY

weekly REFLECTION
Ideas, THOUGHTS, QUESTIONS, DISCOVERIES

Museum

Monday

weekly reflection
IDEAS, THOUGHTS, QUESTIONS, DISCOVERIES

name:

WEEK 26 • PAGE 56

Tuesday Trivia

WHICH PICTURE IS YOUR FAVORITE?
WHY?

1. _____
2. _____
3. _____
4. _____
5. _____
6. _____
7. _____

wednesday Story Prompt...

Draw what you imagine.

THURSDAY

Critique

FELDMAN'S MODEL OF ART CRITICISM

In the box labeled **Describe**, list the visual qualities of the painting. Next, **Analyze** - identify the elements and principles of art in the piece. Then, **Interpret** the possible meaning or mood conveyed. Finally, make a **Judgement** of the strengths/weaknesses of the artwork; justify why you do or don't like it.

DESCRIBE

analyze



INTERPRET

JUDGEMENT

FRIDAY

Memory Drawing

masterpiece

Monday

UP UNTIL THE 20'S, SUCH BEHAVIOR WOULD HAVE BEEN CONSTRUED AS INAPPROPRIATE, BUT THE RISE OF FEMINISM IN THE MID-1920'S CONTRIBUTED TO GRADUAL CHANGES IN SUCH PERCEPTIONS. FOR INSTANCE, RESTAURANTS BEGAN TO POST SIGNS IN THEIR WINDOWS READING 'TABLES FOR LADIES'. HOW DID HOPPER ADDRESS THE CHANGES IN AMERICAN SOCIETY? WHAT SOCIETY CHANGES WERE TAKING PLACE IN 1920-1930?

Snail mail

Tuesday

weekly reflection
IDEAS, THOUGHTS, QUESTIONS, DISCOVERIES



Wednesday

Vocab

Define it: _____

WATCH THE VIDEO, THEN WRITE THE RECIPE:

THURSDAY

heist

READ ABOUT THE NSAF, THEN CREATE A LIST OF PRECAUTIONS OWNERS SHOULD TAKE WHEN HOUSING FAMOUS ARTWORK. WHAT WOULD YOU SUGGEST? (RECORD WHAT TO DO WHEN A THEFT HAS BEEN DISCOVERED.)

FRIDAY

Rewrite THE QUOTE

5 senses in art

Monday

TASTE

see

Hear

TOUCH

smell

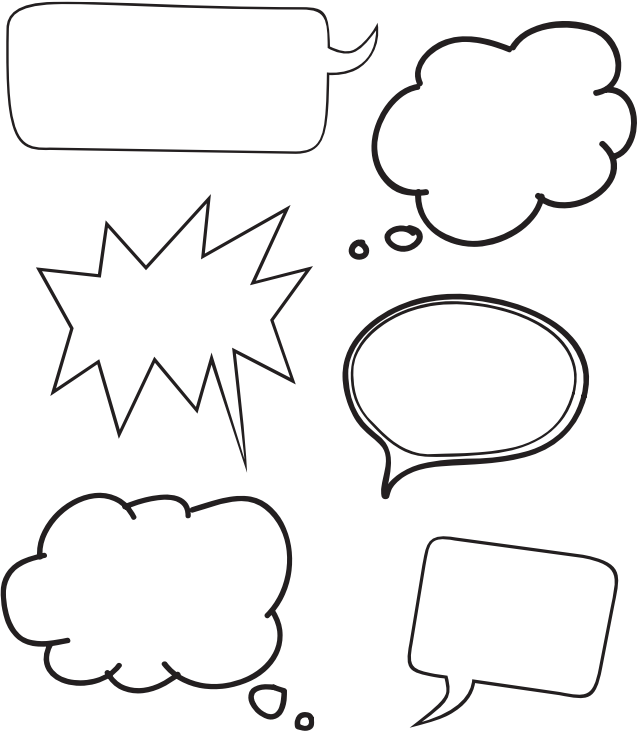
Tuesday

design

weekly reflection
IDEAS, THOUGHTS, QUESTIONS, DISCOVERIES

Wednesday

Tell me THIS...



Thursday

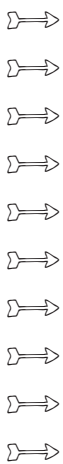
Shape up

Friday

Art Comparison

SIMILARITIES

Differences



WHICH ART PIECE DO YOU PREFER AND WHY?

Monday

Storyboard

--	--

--	--

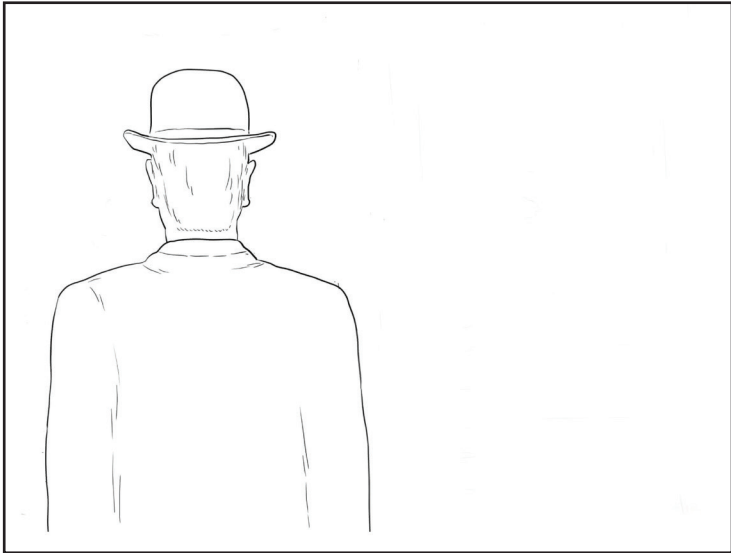
--	--

Tuesday

Tell Us...

Wednesday

Finish THIS...



THURSDAY

Character analysis

Friday

\$ WHAT'S IT'S *Worth*

ARTIST-*Inspired*

QUOTE:

ARTIST:

Monday

WHAT DID HE DO TO DEVELOP CRAFT IN HIS ART FIELD?

Tuesday



Extra! Extra!

WHAT MAKES IT A 'GRAND' PANORAMA?

wednesday

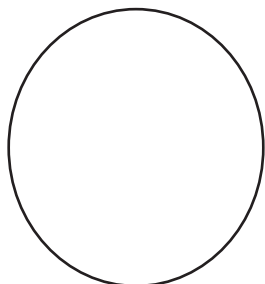
Habit OF MIND

WRITE THE HABIT OF MIND:

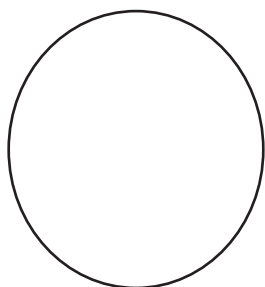
WRITE IDEAS FOR HOW TO STRENGTHEN THIS SKILL:

THURSDAY

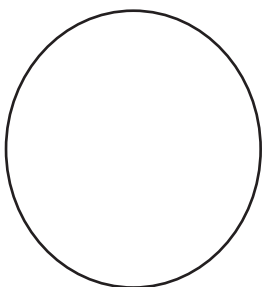
Tell Apart



FINGERPRINT THE PAINT



FINGERPRINT THE PAINT



FINGERPRINT THE PAINT

make sure paint is dry before closing!

FRIDAY

Doodle

weekly REFLECTION

IDEAS, THOUGHTS, QUESTIONS, DISCOVERIES

Monday

ARTIST:

Artist INSPIRATION

WHAT HARD THINGS HAVE YOU
GONE THROUGH IN YOUR LIFE THAT COULD INSPIRE ART?

Tuesday ...isms

MOVEMENT:

In art

When:

Where:

INFLUENCE:



CHARACTERISTICS:

CONTRIBUTING ARTISTS:

MOVEMENT:

When:

Where:

INFLUENCE:

CHARACTERISTICS:

CONTRIBUTING ARTISTS:

wednesday

Sketch THIS...

Search THIS...

THURSDAY

OBSERVE THE ARTWORK, THEN MATCH THE PLAY WITH THE NUMBERED ARTWORK.

THE SHAKESPEAREAN EQUATION SERIES: ARTIST: _____

- ALL'S WELL THAT ENDS WELL
 - AS YOU LIKE IT
 - HAMLET
 - JULIUS CAESAR
 - KING LEAR
 - MACBETH
 - MEASURE FOR MEASURE
 - MERRY WIVES OF WINDSOR
 - MUCH ADO ABOUT NOTHING
 - ROMEO & JULIET
 - THE MERCHANT OF VENICE
 - TWELFTH NIGHT
1. _____
 2. _____
 3. _____
 4. _____
 5. _____
 6. _____
 7. _____
 8. _____
 9. _____
 10. _____
 11. _____
 12. _____

FRIDAY

Exploring ELEMENTS & PRINCIPLES

"All my work in the past 50 years, all my subjects have found their inspiration in my childhood. My childhood has never lost its magic, it has never lost its mystery, and it has never lost its drama." — Louise Bourgeois

ELEMENTS

- LINE
- SHAPE
- FORM
- COLOR
- VALUE
- TEXTURE
- SPACE

PRINCIPLES

- PATTERN
- CONTRAST
- EMPHASIS
- BALANCE
- SCALE
- HARMONY
- RHYTHM/MVMT
- UNITY
- VARIETY

weekly REFLECTION
IDEAS, THOUGHTS, QUESTIONS, DISCOVERIES

Museum

Monday

weekly REFLECTION
IDEAS, THOUGHTS, QUESTIONS, DISCOVERIES

MARK THE MUSEUM BELOW:

name:



WHAT IS UNIQUE ABOUT THIS MUSEUM?

Week 32 • Page 68

Tuesday Trivia

WHICH DIRECTION DO YOU LIKE
THE PAINTING? WHY?

wednesday Story Prompt...

Draw what you imagine.

THURSDAY

Critique

FELDMAN'S MODEL OF ART CRITICISM

In the box labeled **Describe**, list the visual qualities of the painting. Next, **Analyze** - identify the elements and principles of art in the piece. Then, **Interpret** the possible meaning or mood conveyed. Finally, make a **Judgement** of the strengths/weaknesses of the artwork; justify why you do or don't like it.

DESCRIBE

analyze



INTERPRET

JUDGEMENT

FRIDAY

Memory Drawing

masterpiece

Monday

ARTIST:

WHAT'S UNIQUE ABOUT THIS ARTIST / ARTWORK?

Interview

Tuesday

weekly reflection
IDEAS, THOUGHTS, QUESTIONS, DISCOVERIES



Wednesday

Vocab

Define it: _____

WHAT are TWO variants from the word & their meanings:

THURSDAY

heist

Read about the heist, then record your response to the return-to-sender method. What was successful about it? What was flawed?

FRIDAY

Rewrite THE QUOTE

5 senses in art

Monday

TASTE

see

Hear

TOUCH

smell

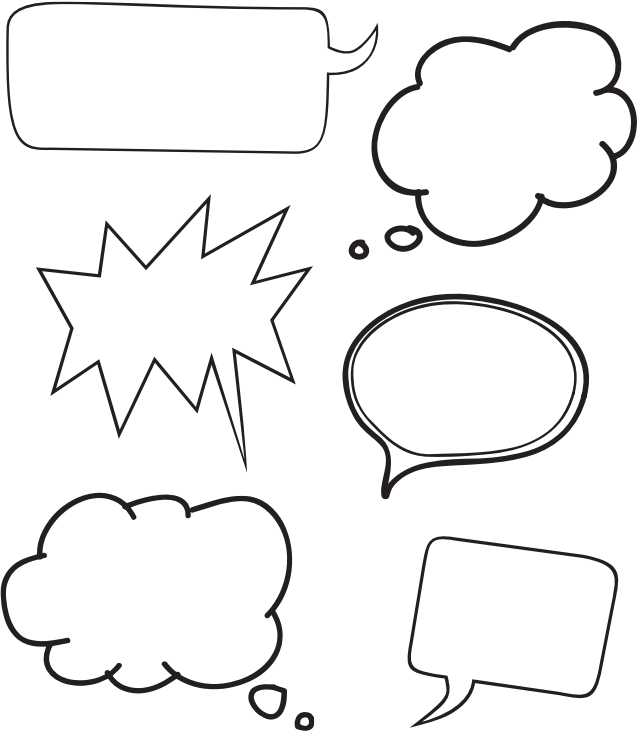
Tuesday

design

weekly reflection
IDEAS, THOUGHTS, QUESTIONS, DISCOVERIES

Wednesday

Tell me THIS...



Thursday

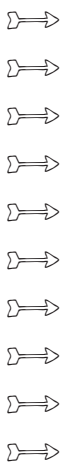
Shape up

Friday

Art Comparison

SIMILARITIES

Differences



WHICH ART PIECE DO YOU PREFER AND WHY?

Monday

Storyboard

--	--

--	--

--	--

Tuesday

Tell Us...

wednesday

Finish THIS...



THURSDAY

Character analysis

FRIDAY

\$ WHAT IS IT'S Worth

WATCH THE VIDEO AND DECIDE THE VALUE OF THIS ART. WRITE THE SIGNIFICANCE OF THIS PIECE AS YOU WATCH.

ARTIST-*Inspired*

Monday

ARTIST:

Tuesday



Extra! Extra!

HOW WILL THE CULTURE PASS INITIATIVE AFFECT THE MUSEUMS AND LOCAL CITIZENS? IS IT A GOOD IDEA? WHY / WHY NOT? WOULD YOU PARTICIPATE?

wednesday

Habit OF MIND

WRITE THE HABIT OF MIND:

WRITE IDEAS FOR HOW TO STRENGTHEN THIS SKILL:

THURSDAY

Tell Apart

example:

example:

example:

example:

FRIDAY

Doodle

weekly REFLECTION
IDEAS, THOUGHTS, QUESTIONS, DISCOVERIES